

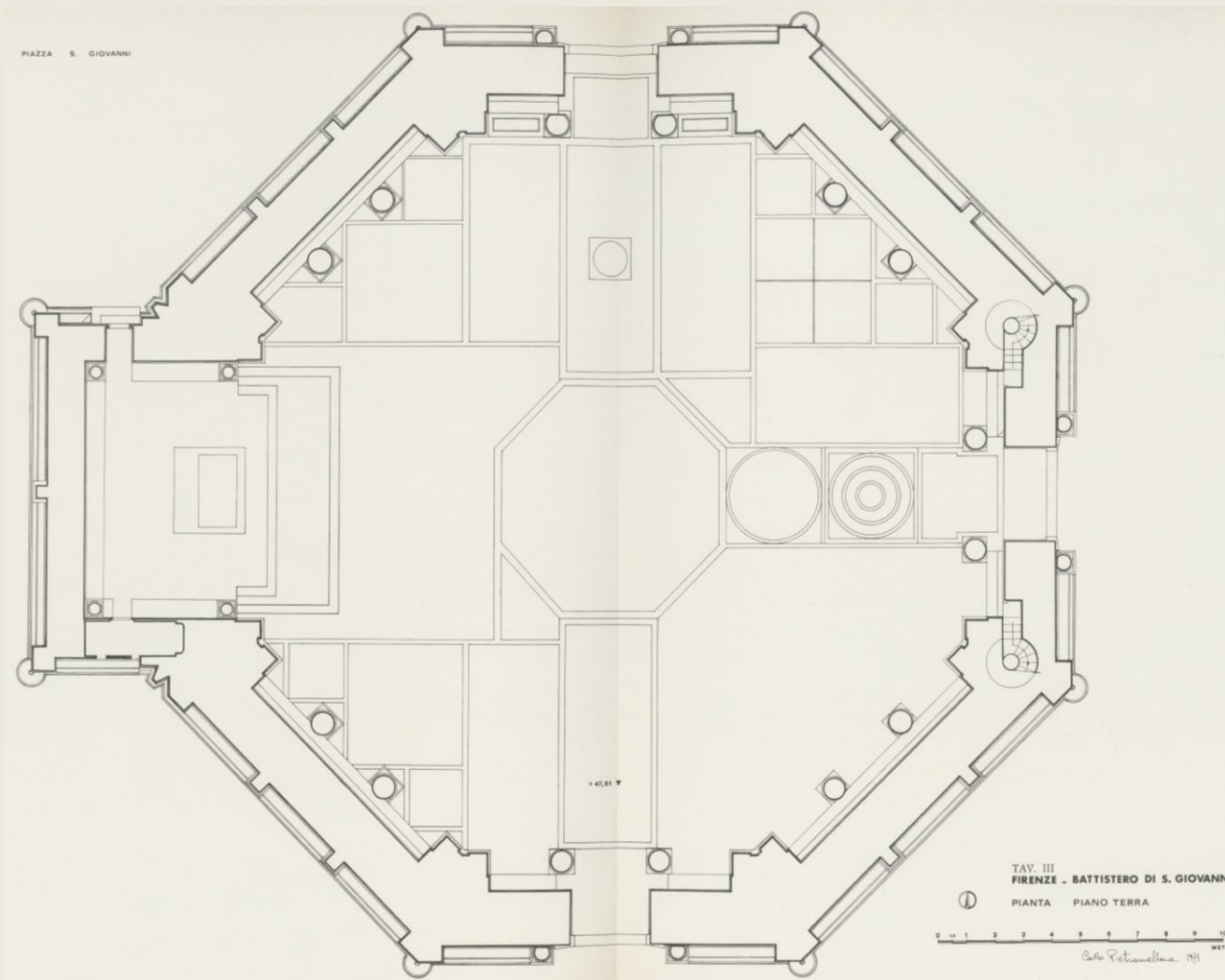
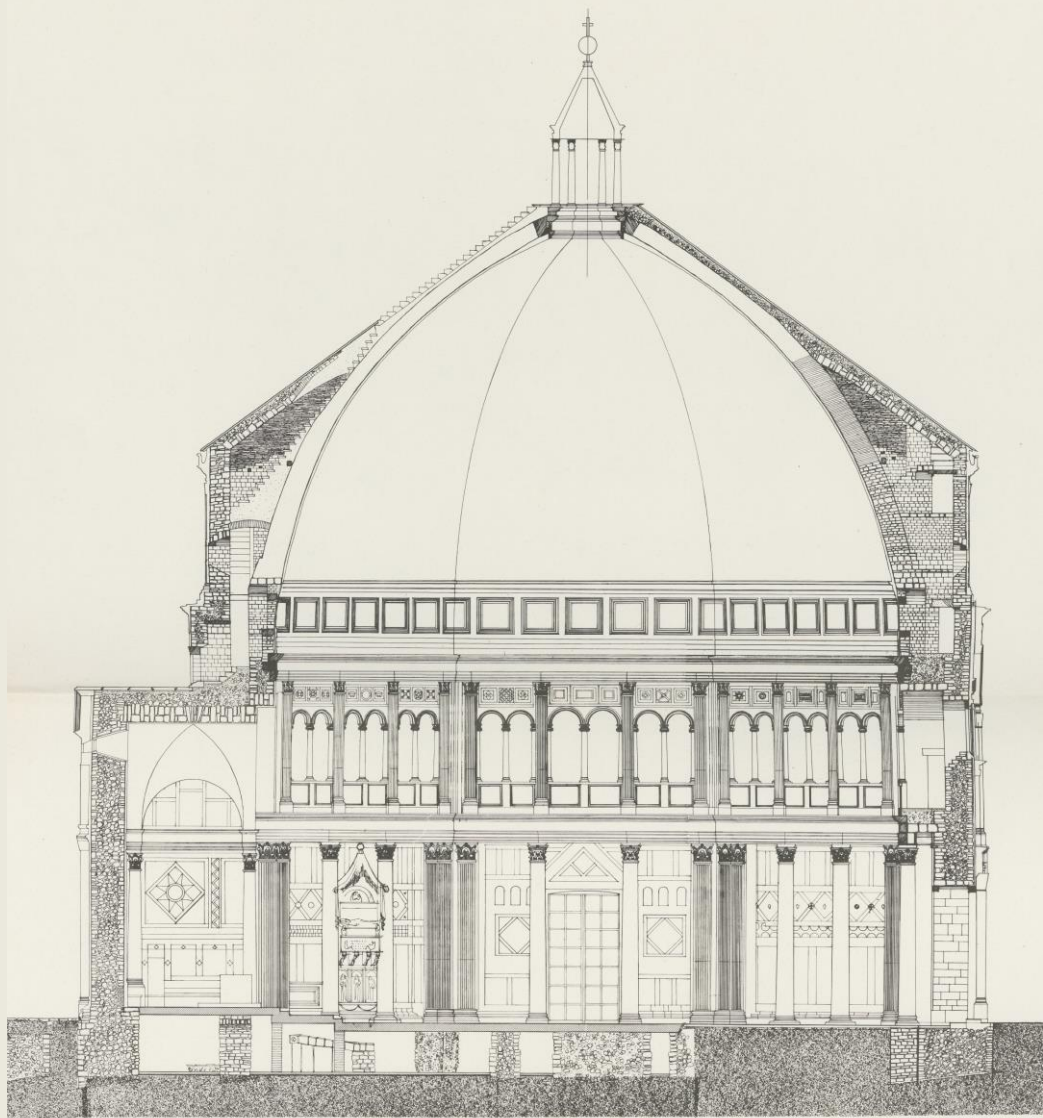


INTERVENTI STRUTTURALI NEL CONSOLIDAMENTO
CONSERVATIVO DEL BATTISTERO DI SAN GIOVANNI

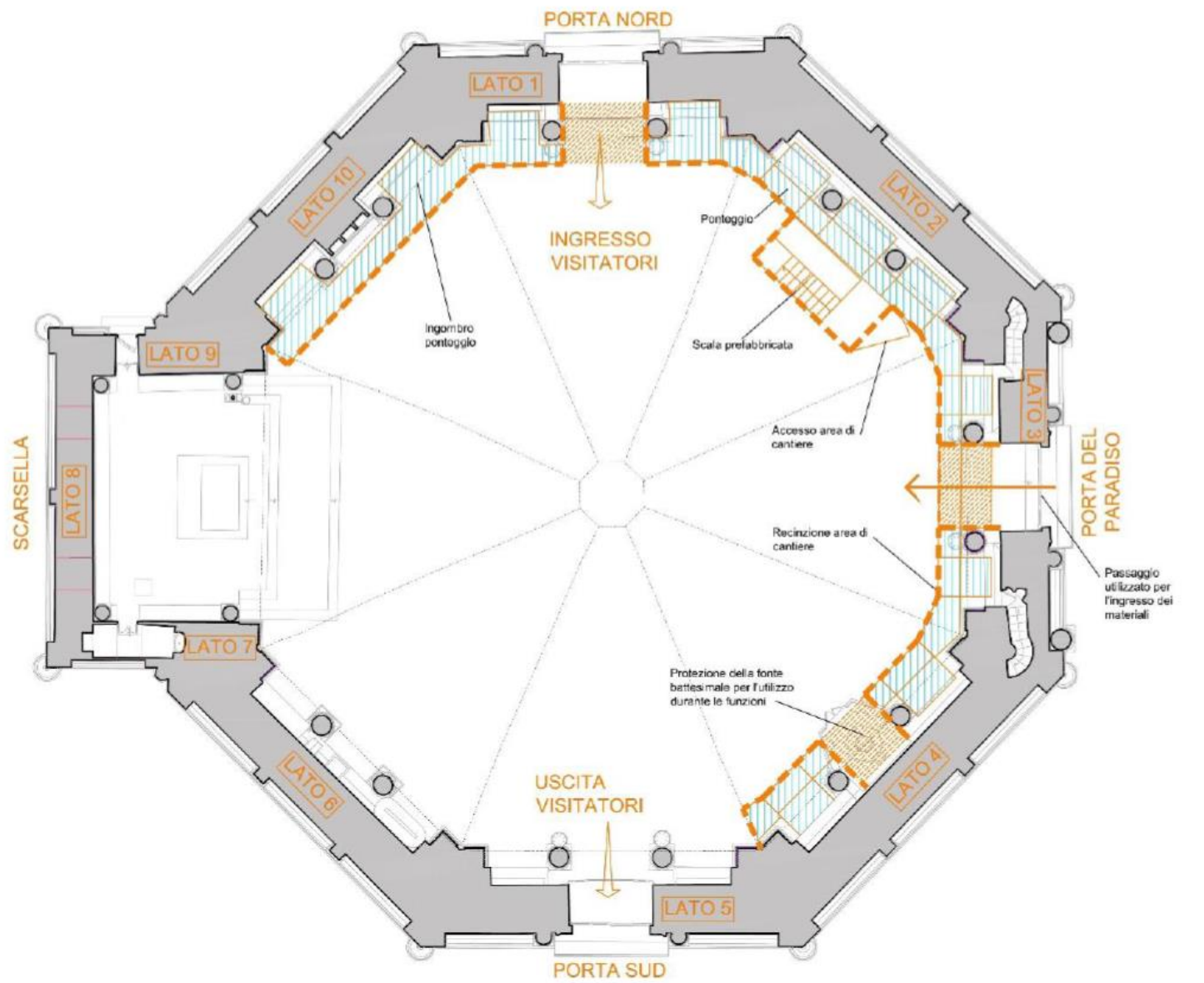
14 MARZO 2024

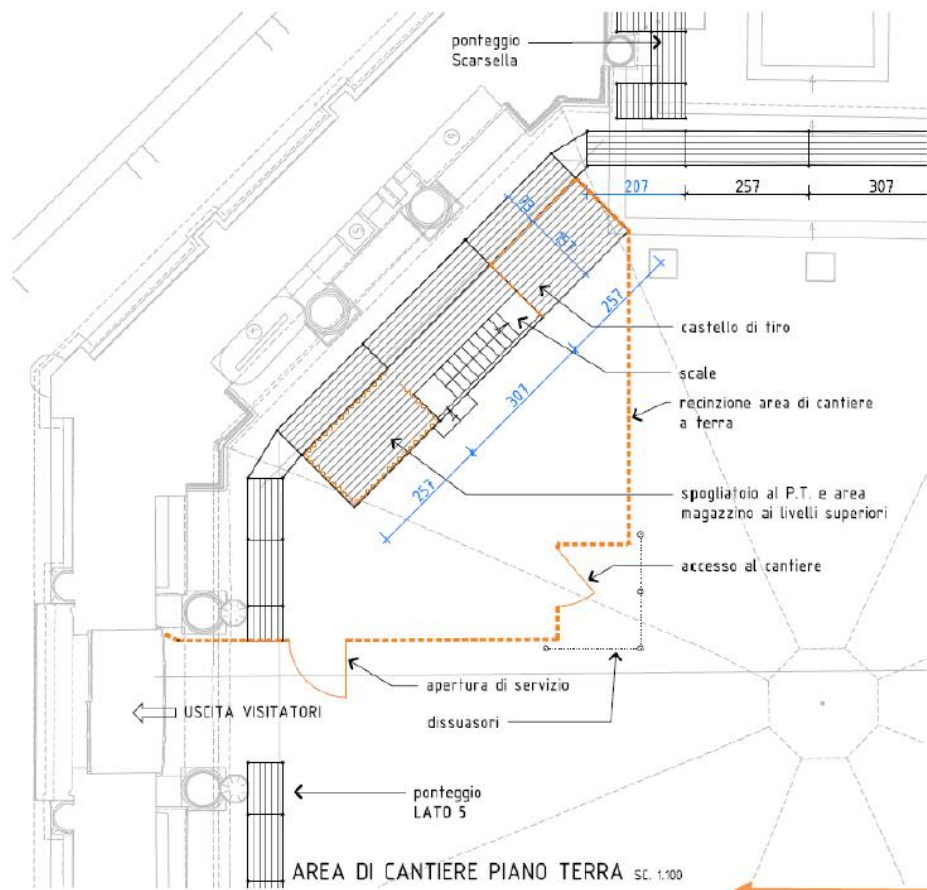
IL CANTIERE DEL
RESTAURO DELLE PARETI INTERNE

ARCH. LORENZO LEONCINI STUDIO SERTEC - FIRENZE

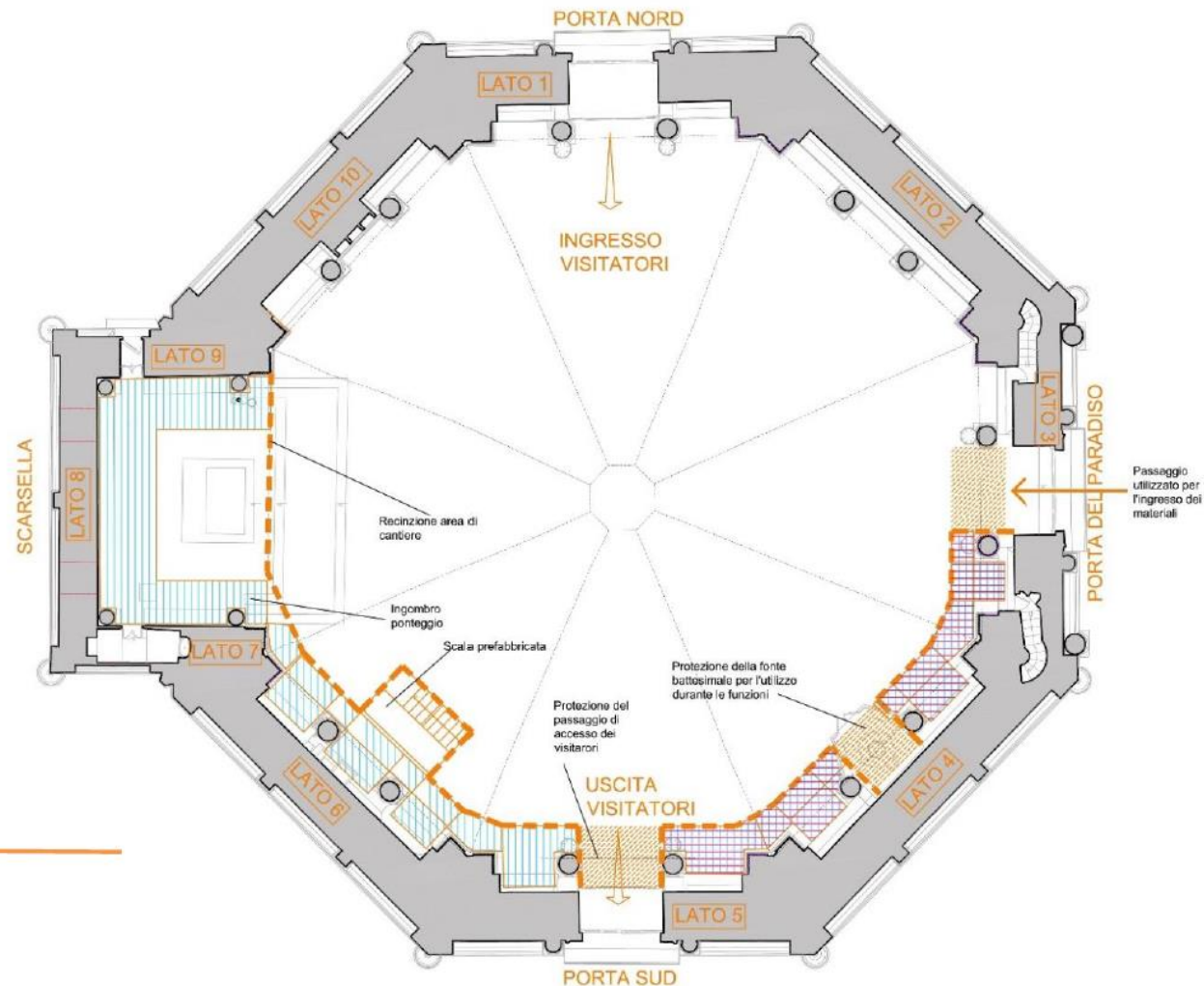


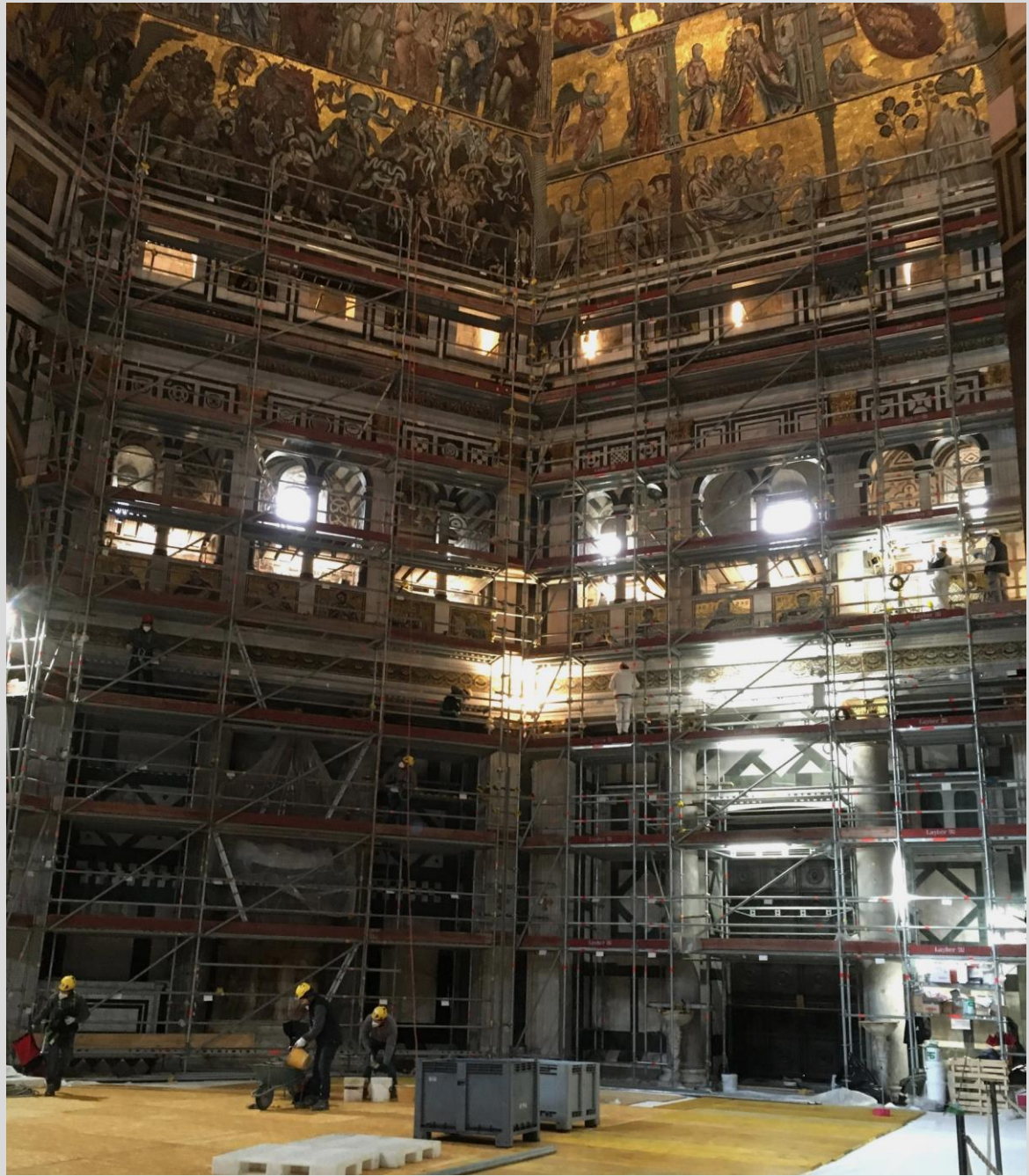
LAYOUT DI CANTIERE ATTUALE





LAYOUT DI CANTIERE COMPLETAMENTO







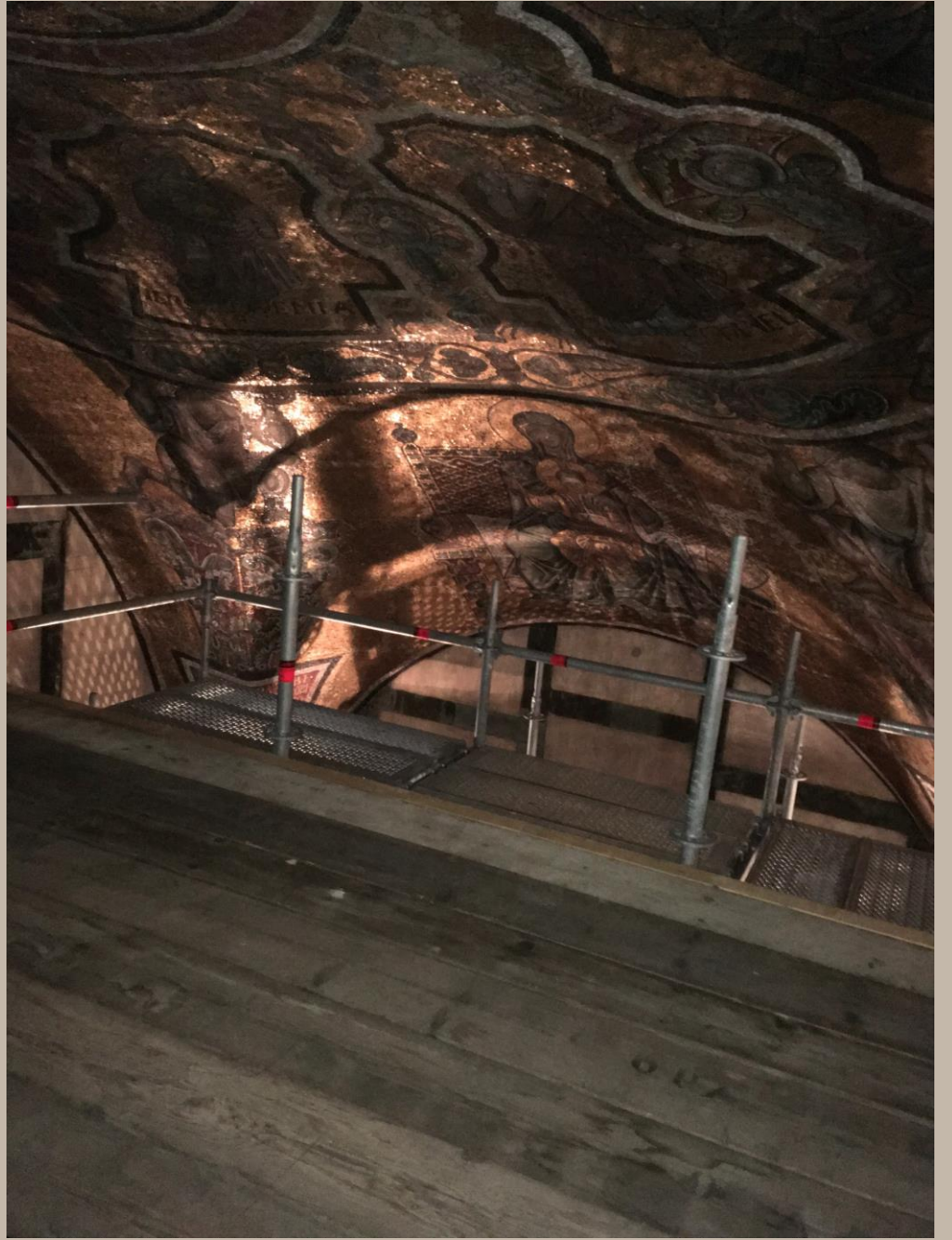
























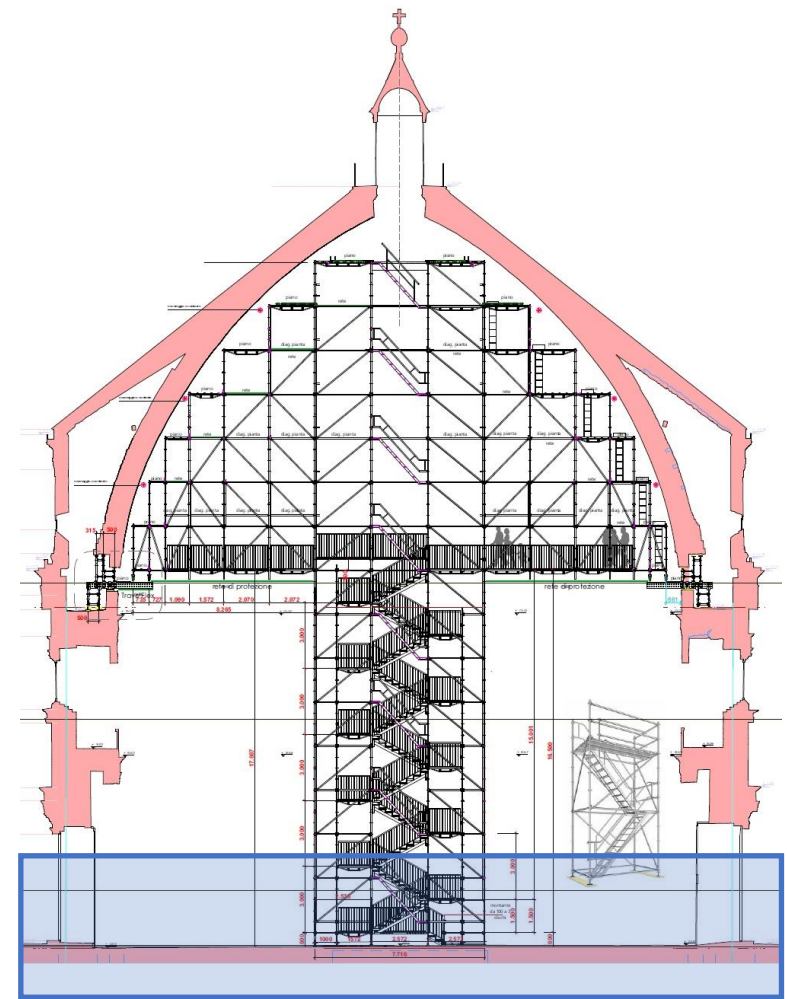
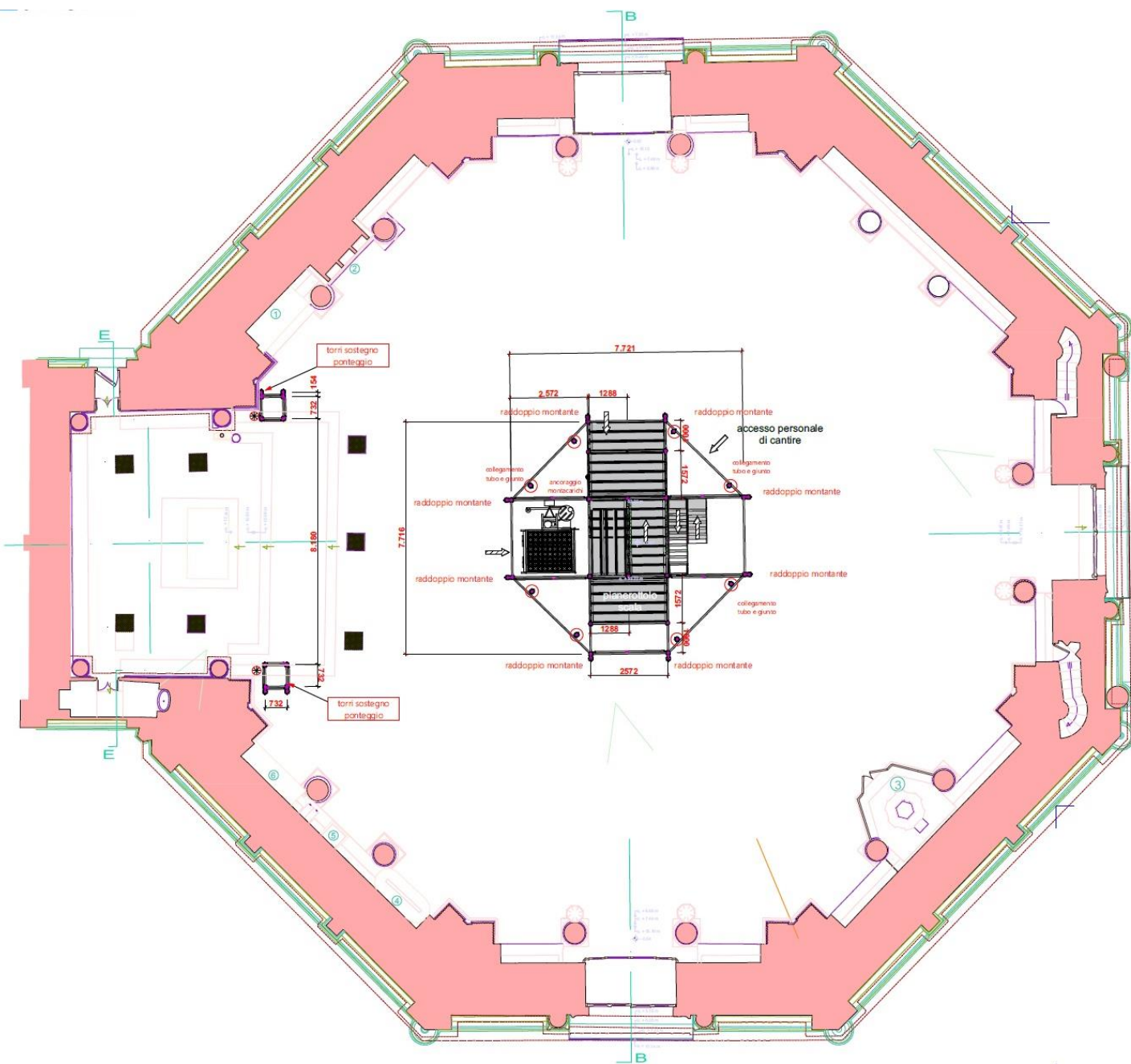


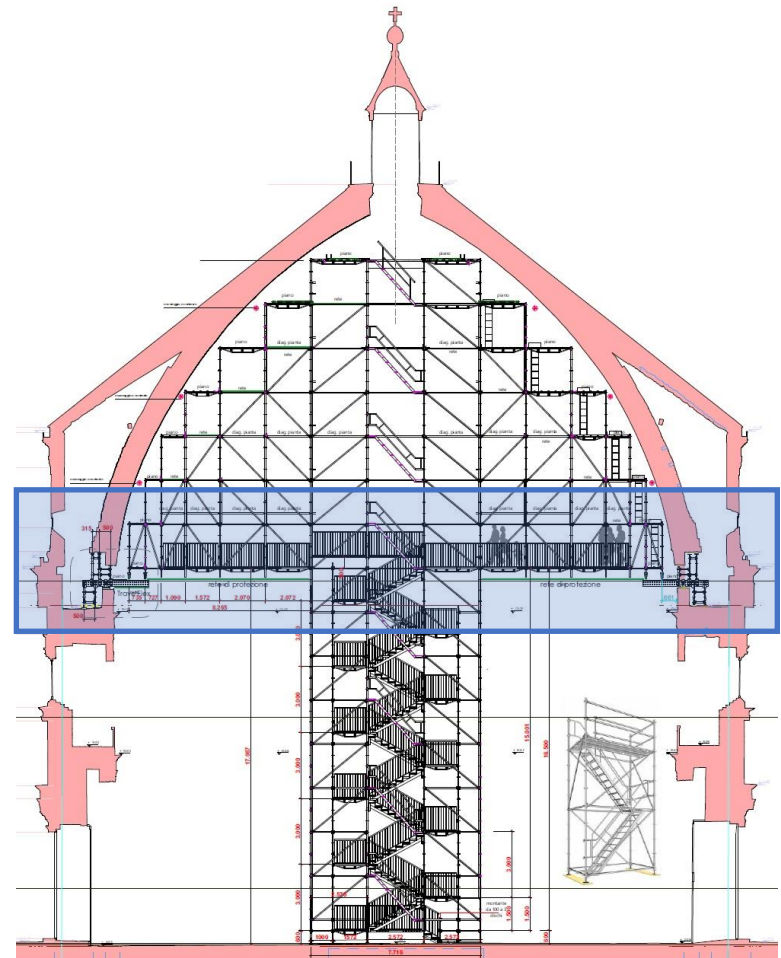
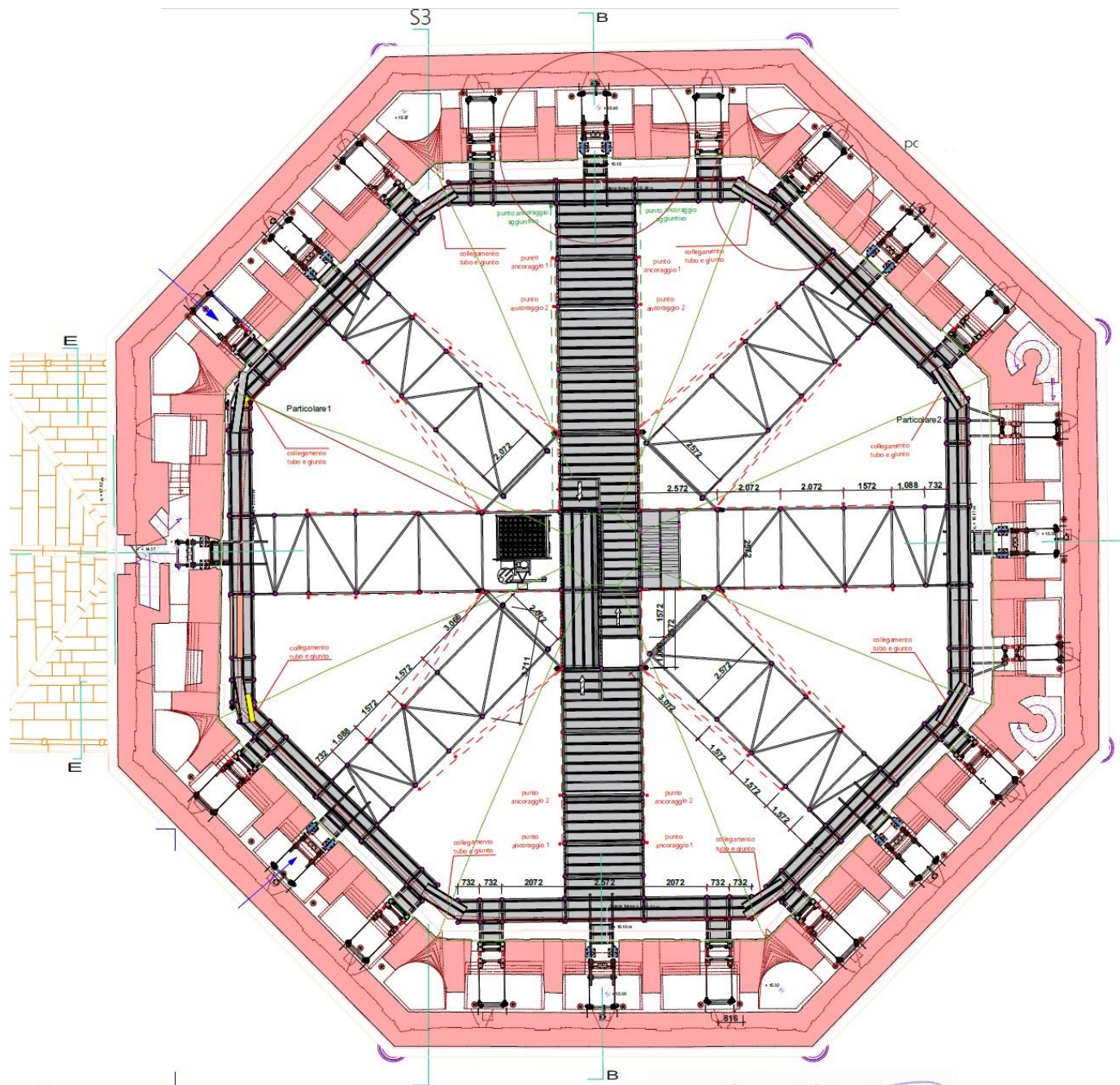


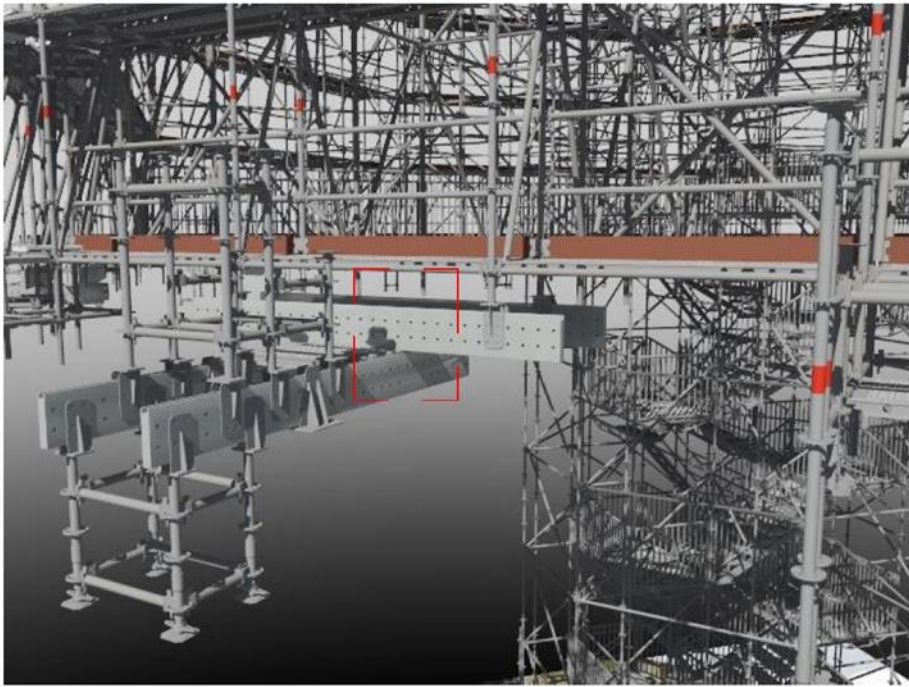
RESTAURO DELLA VOLTA MUSIVA



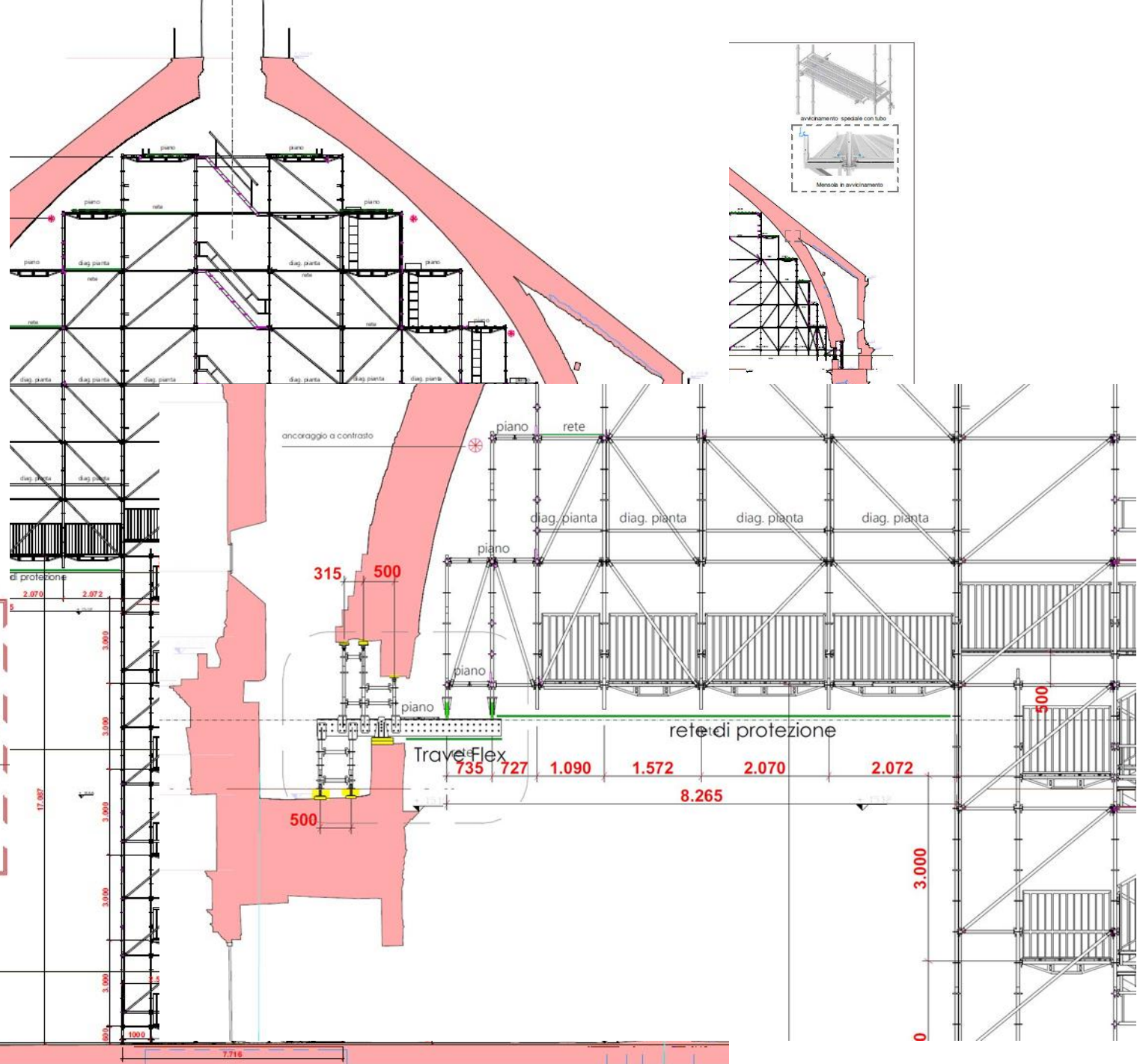
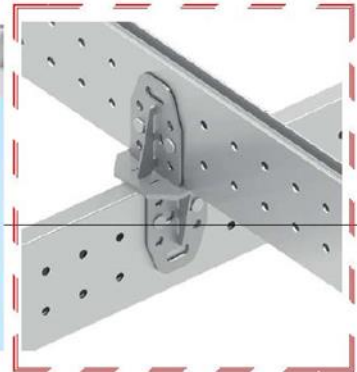
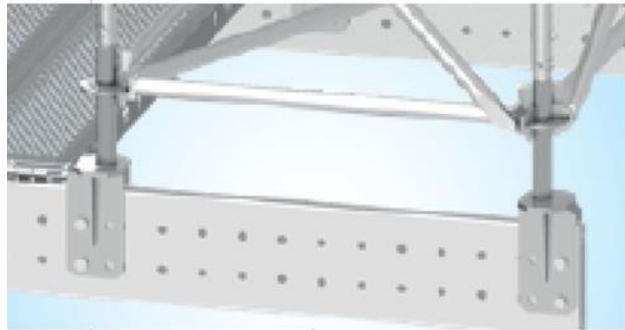


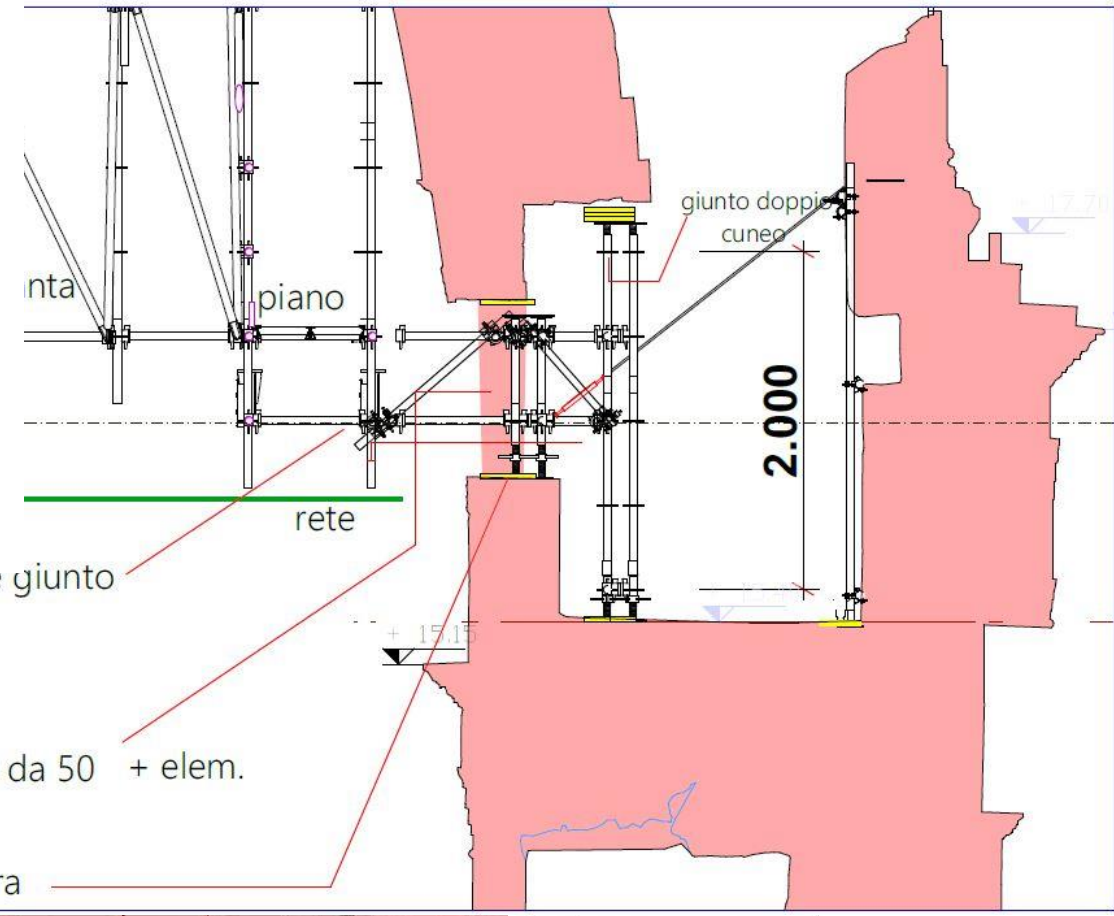
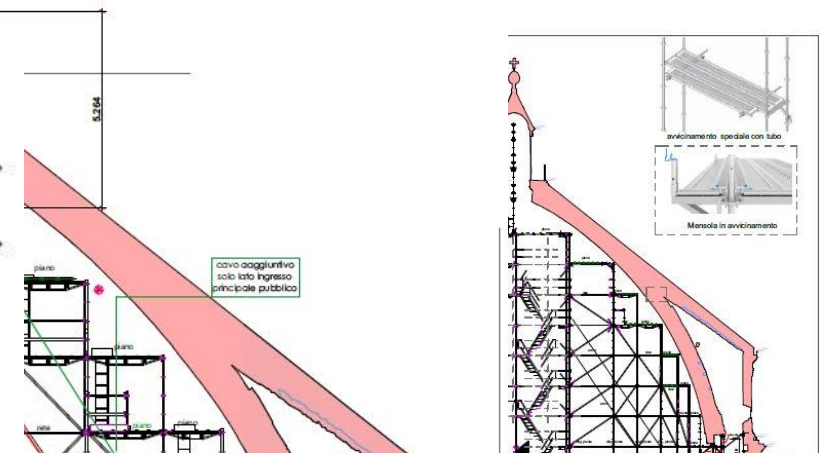
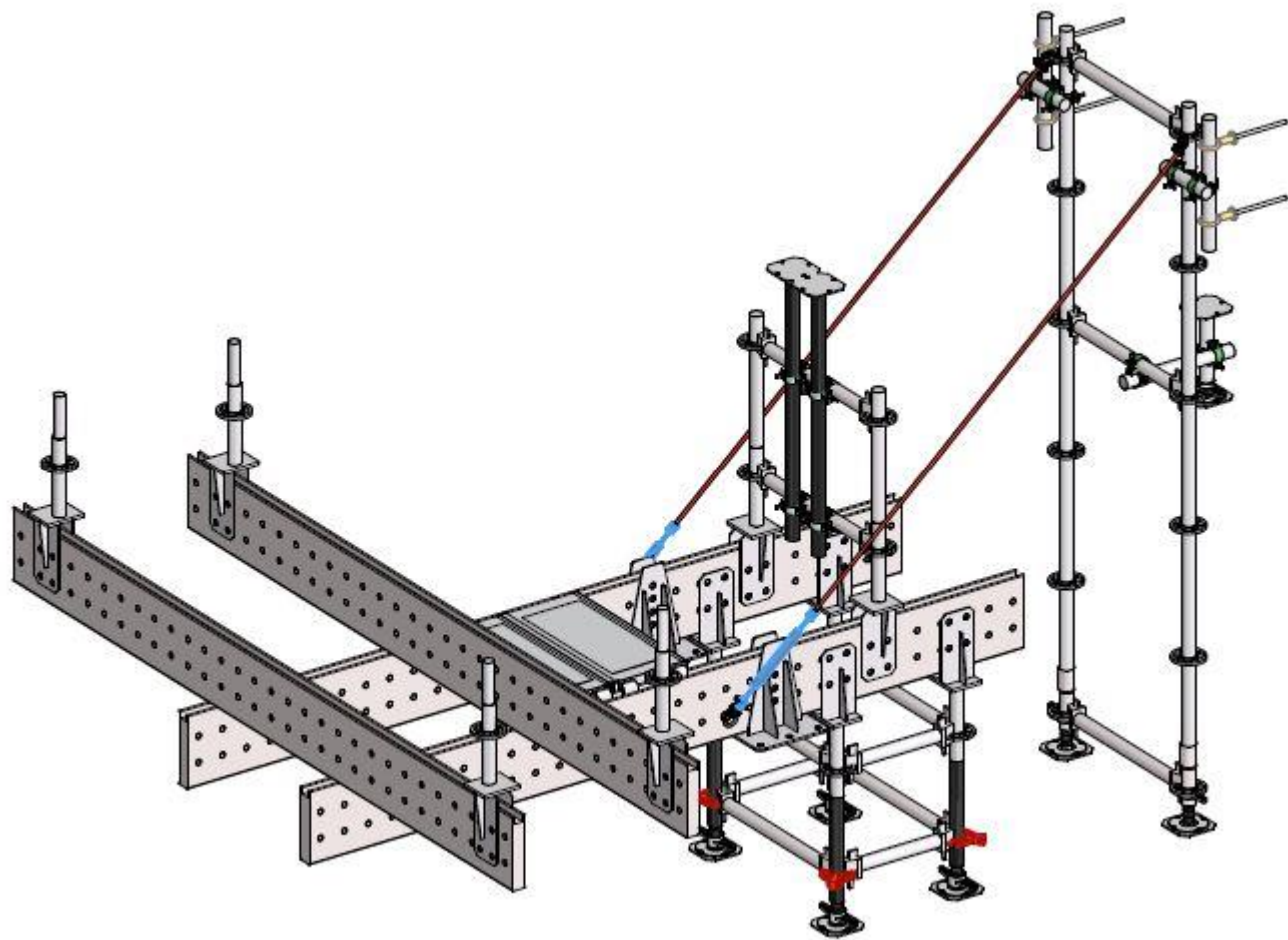






Trave Flex in all.





diagonale tubo e giunto

montante da 50 + elem.

piastra







7.5 Verifiche ancoraggi a parete

Una parte delle sollecitazioni sugli scarichi sulle finestre, vengono ripartiti all'interno e scaricati con un sistema di cavi a parete tramite inghisaggi.

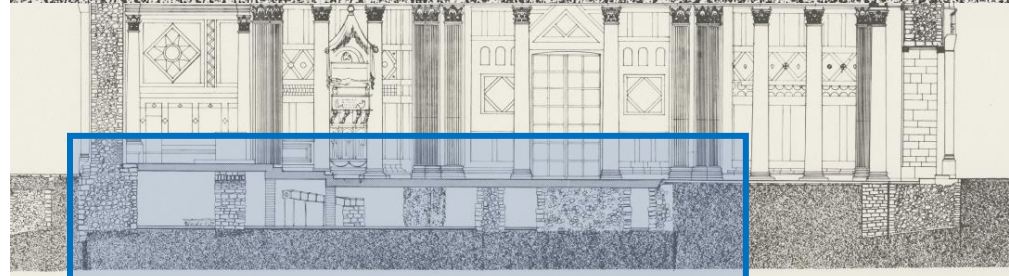
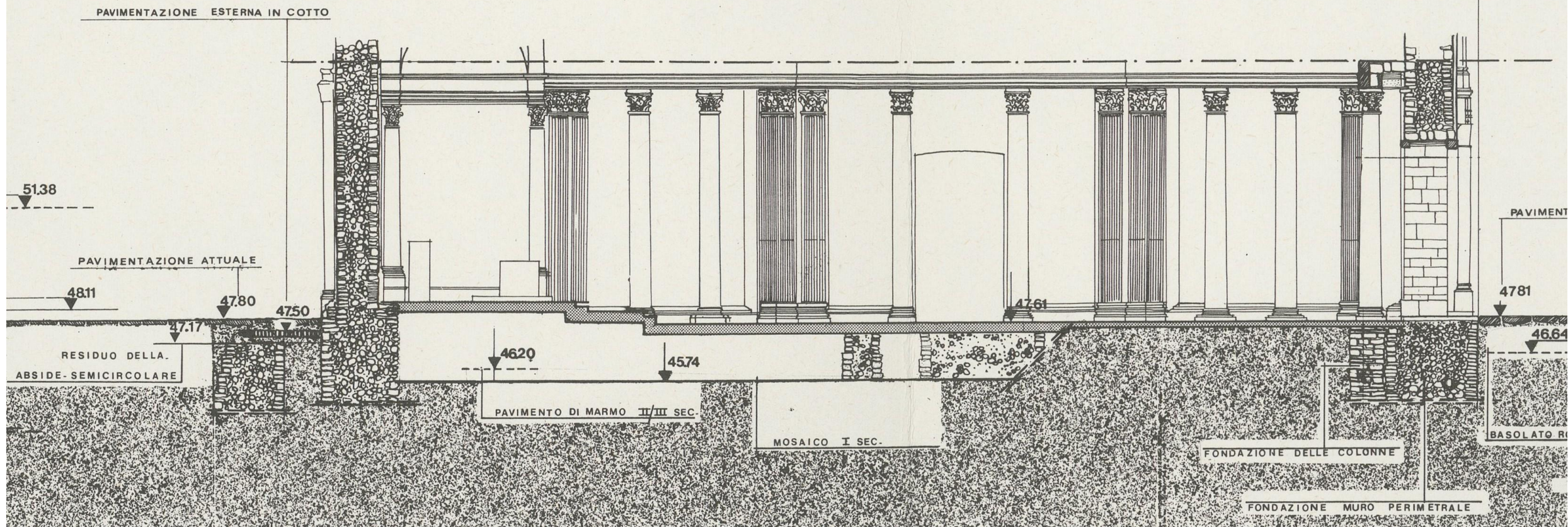
Si stima che su ogni ancoraggio viene determinata una sollecitazione a trazione pari a 2600 daN da ripartire con doppio ancoraggio e che tiene conto di tutte le amplificazioni previste da normativa oltre alle al coefficiente amplificativo pari a 2.5.

Per determinare il valore di resistenza del sistema è stata fatta una specifica prove di trazione uniassiale.

Nel si riportano i risultati della prova che ha dato esito positivo.

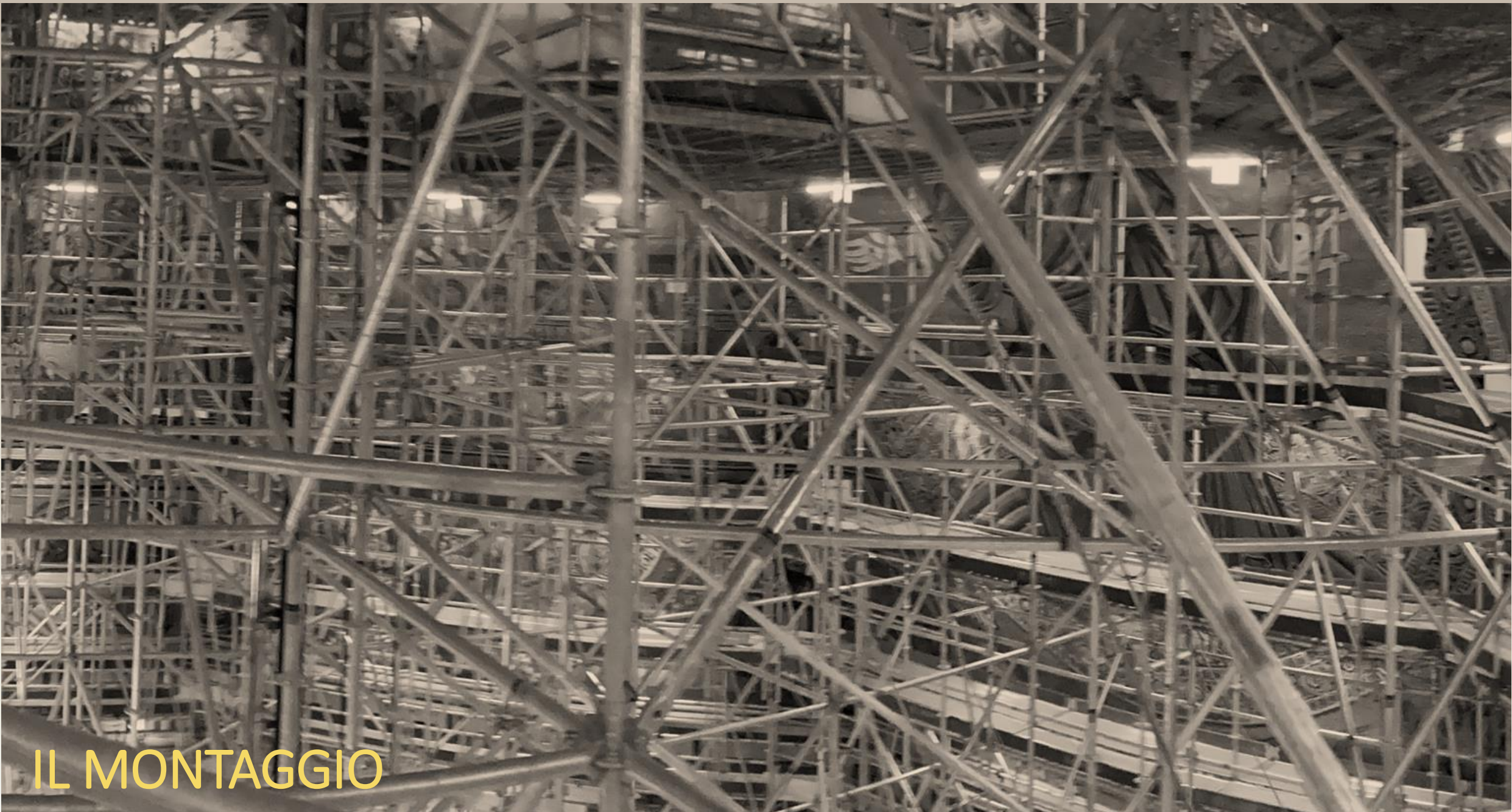


BATTISTERO

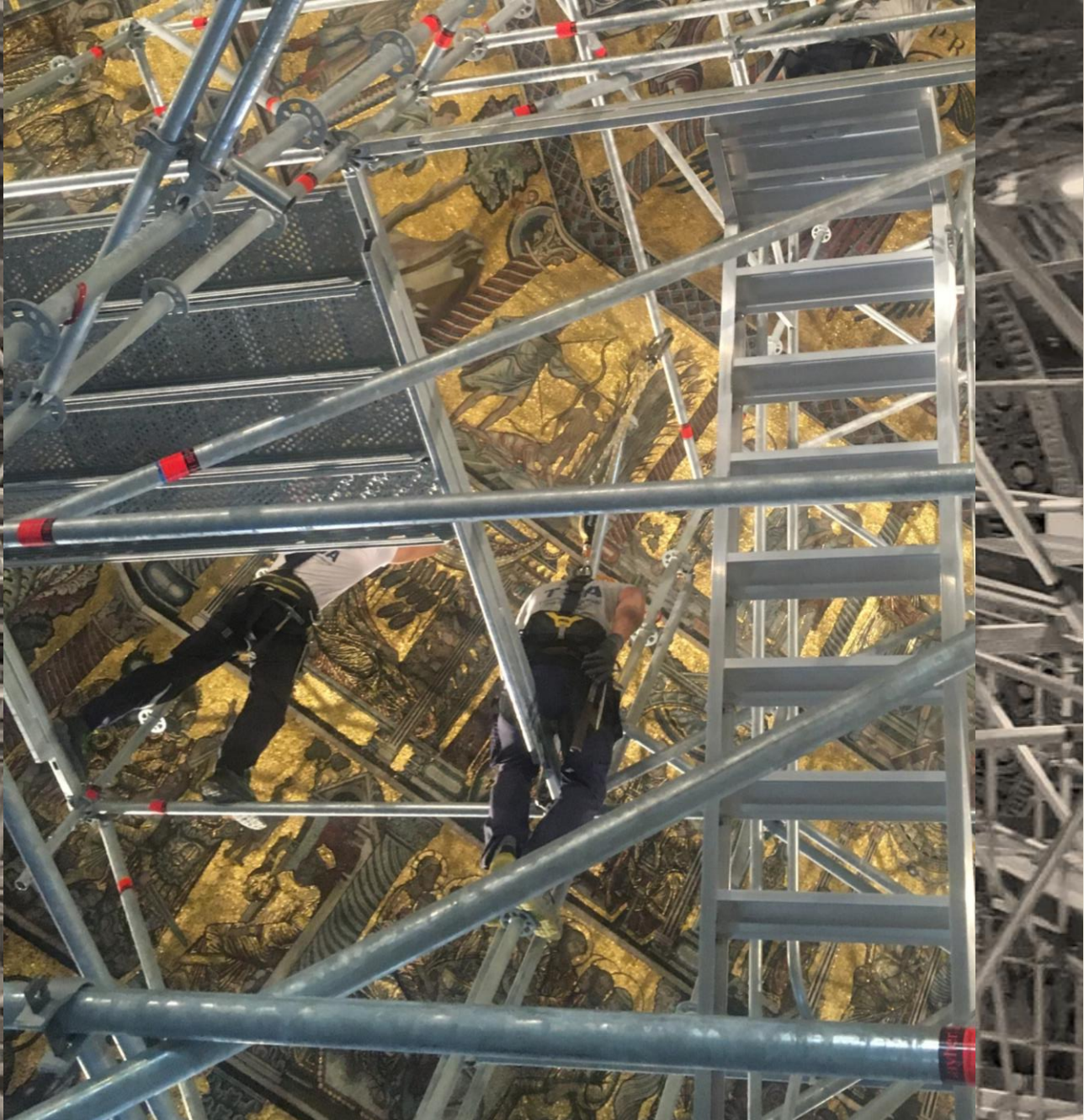
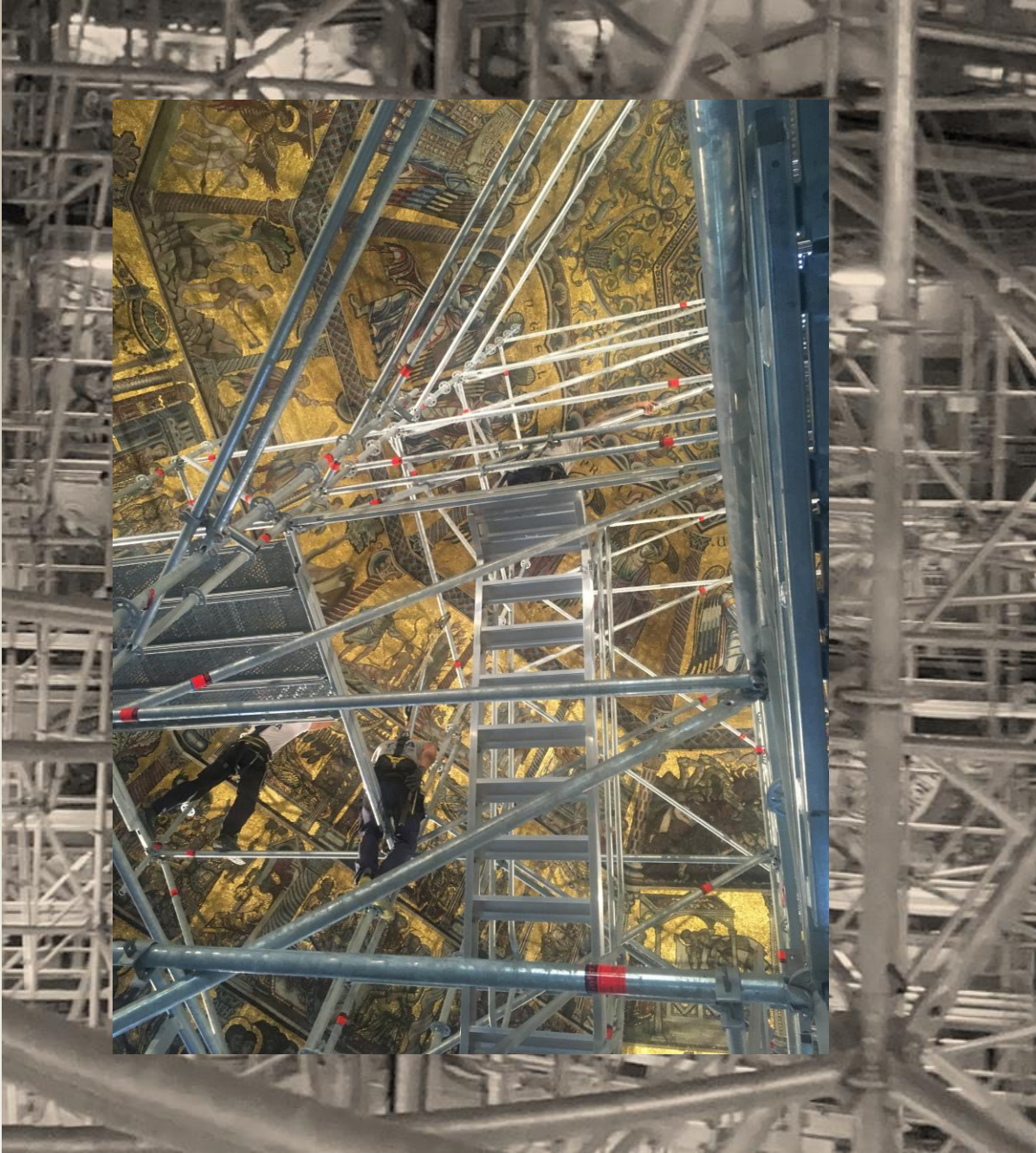


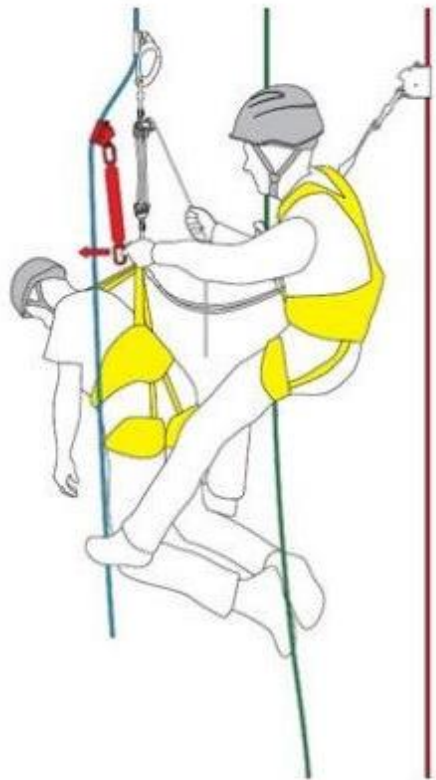






IL MONTAGGIO





BREVE CENNO SULL' OPERAZIONI DI RECUPERO
DI UN SOGGETTO IN SOSPENSIONE

o



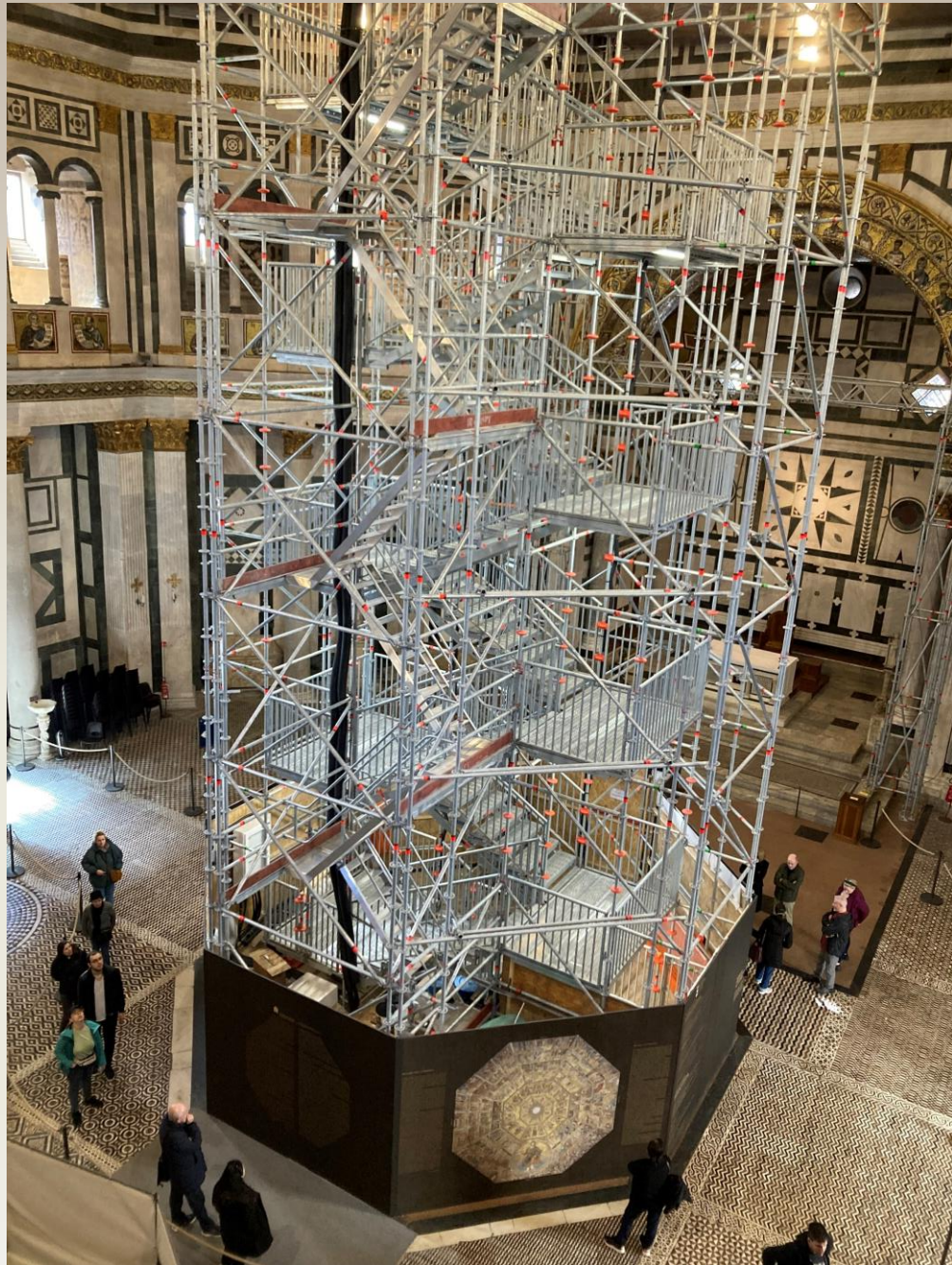






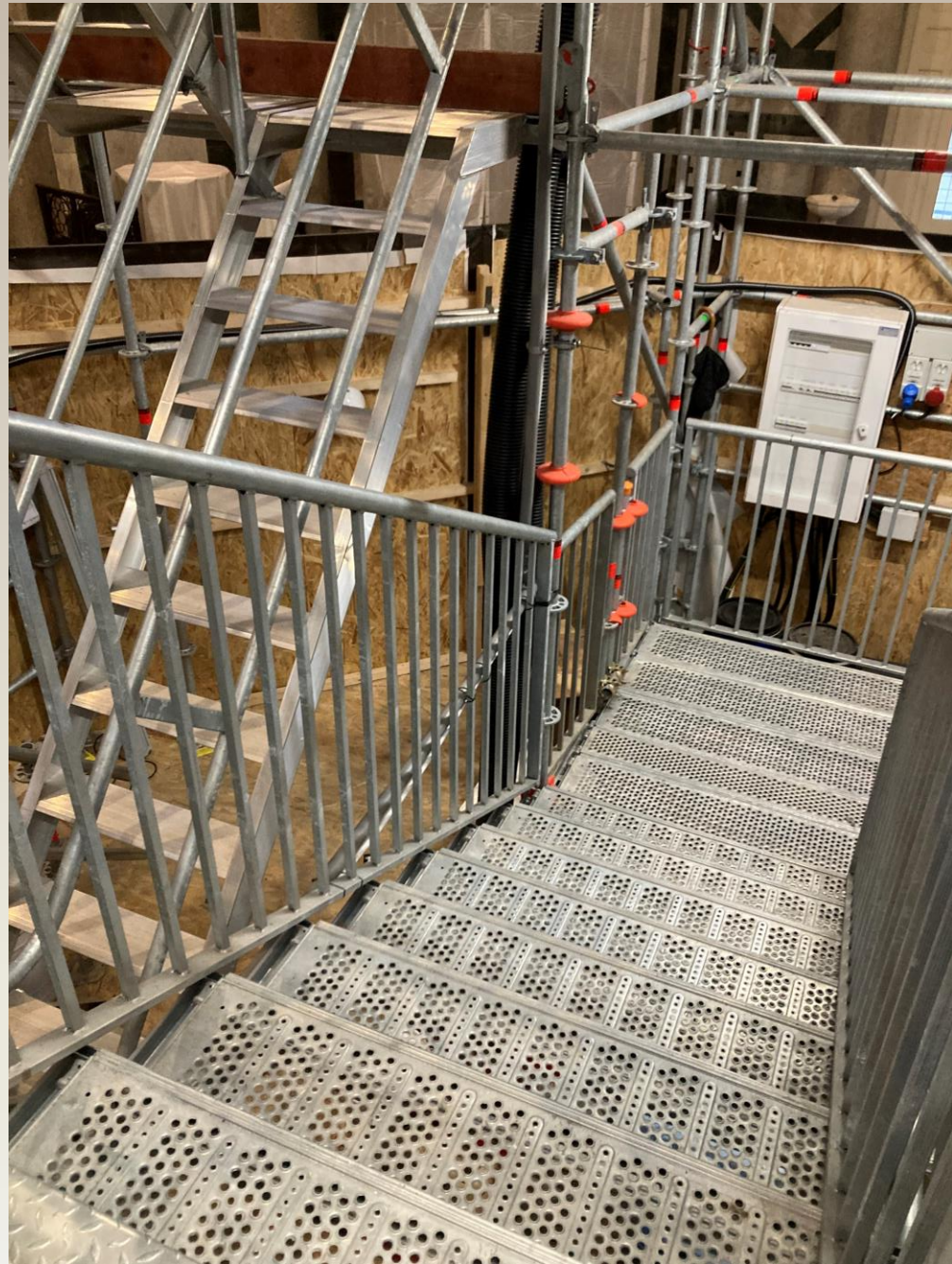




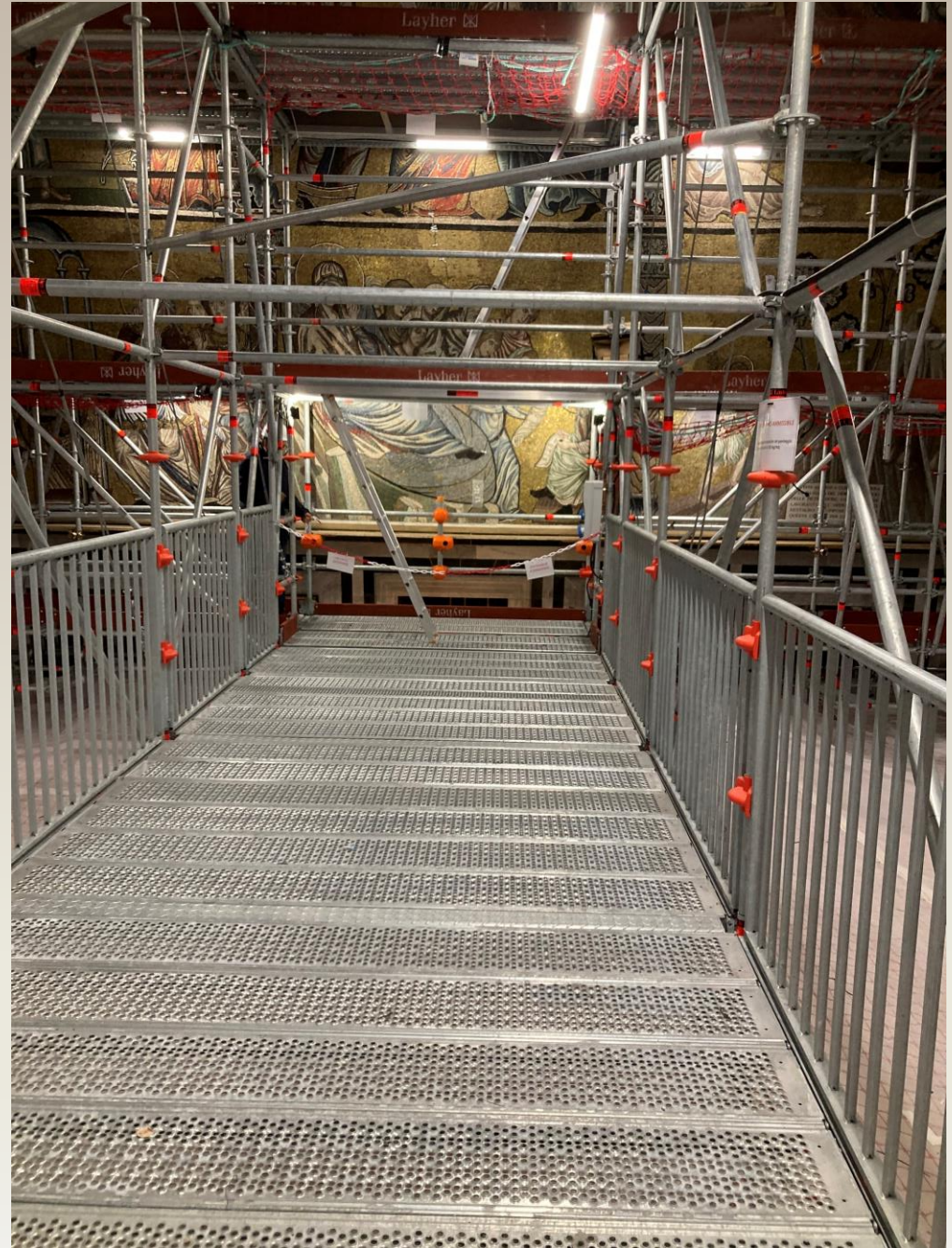


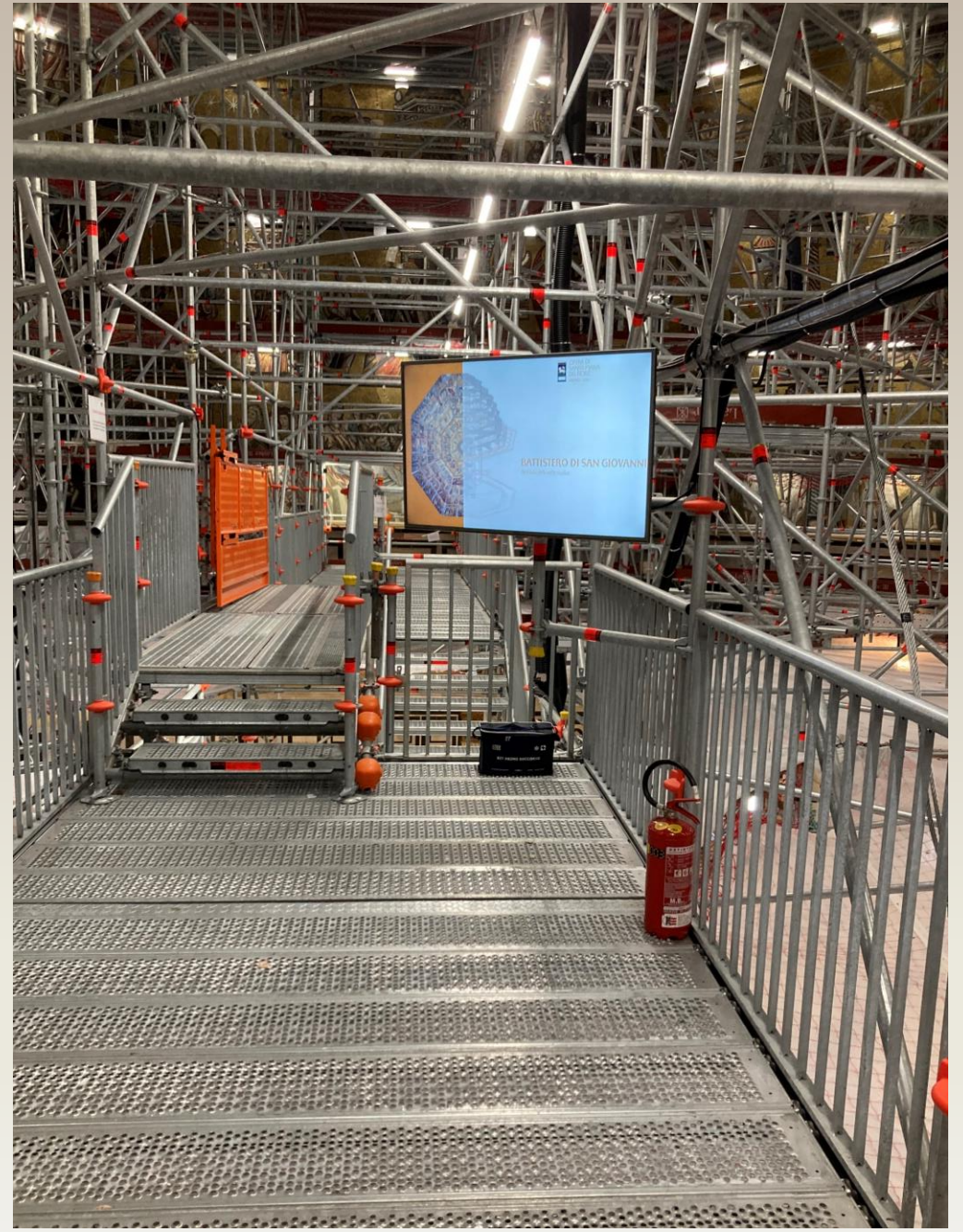
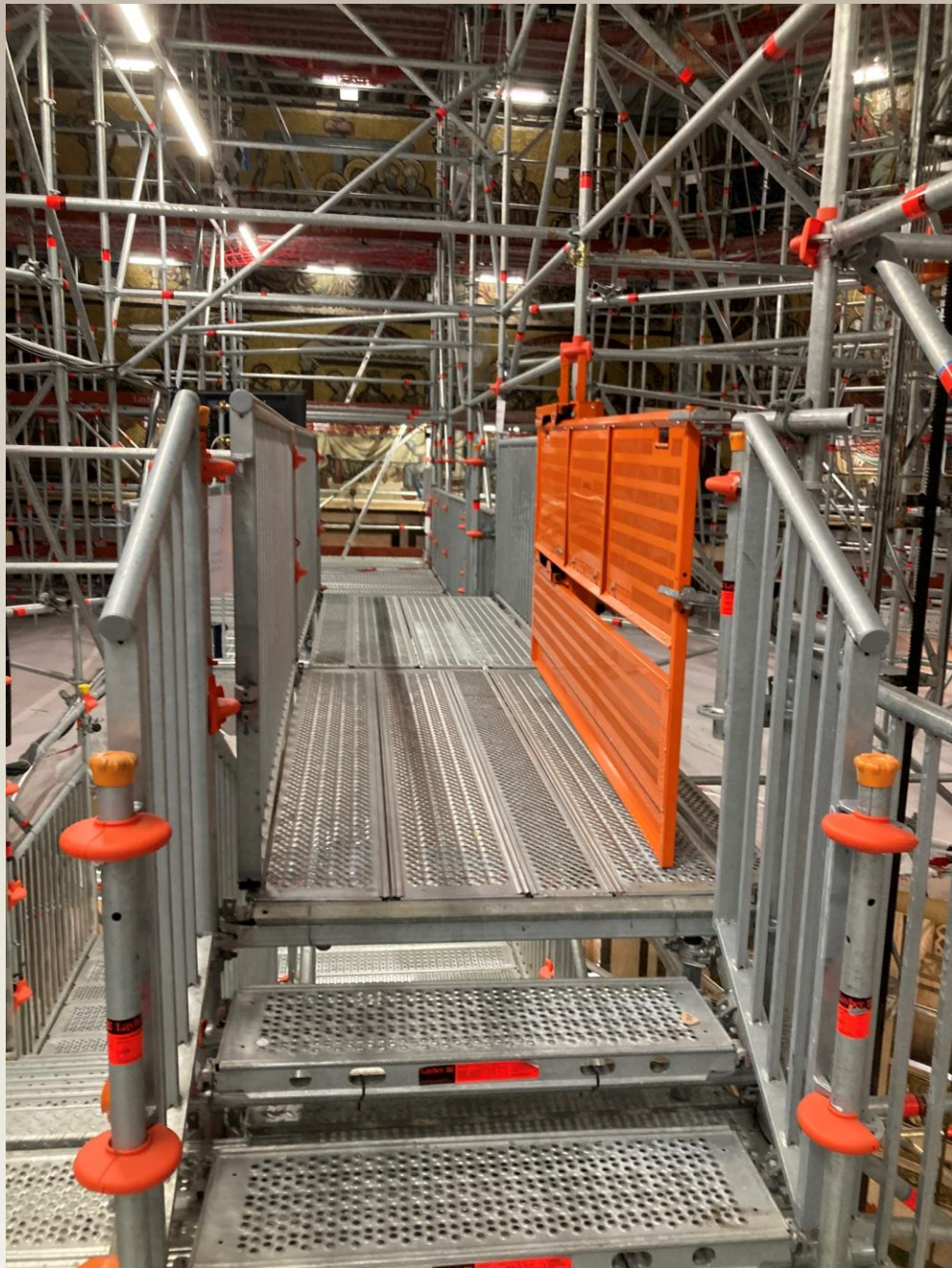






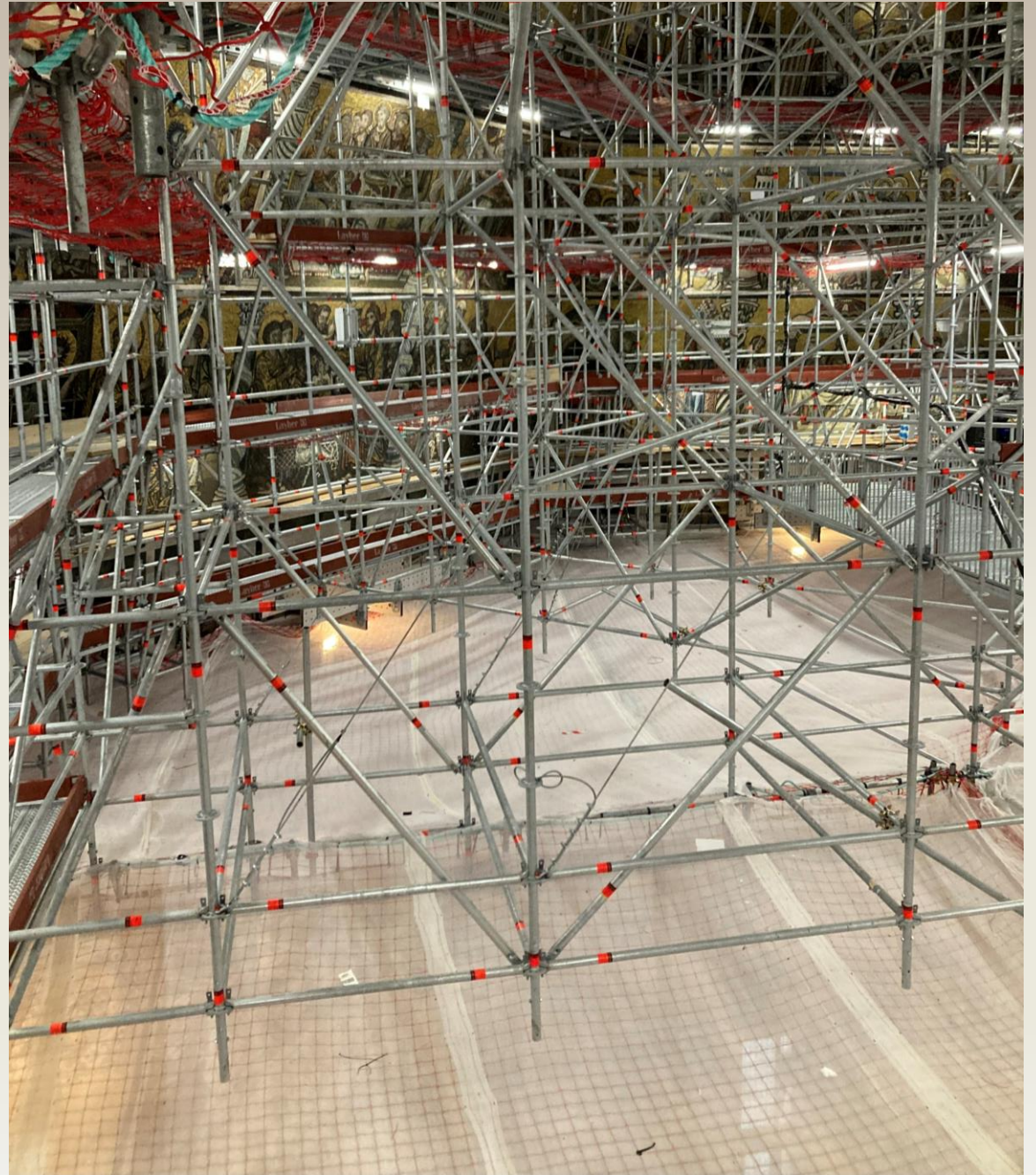




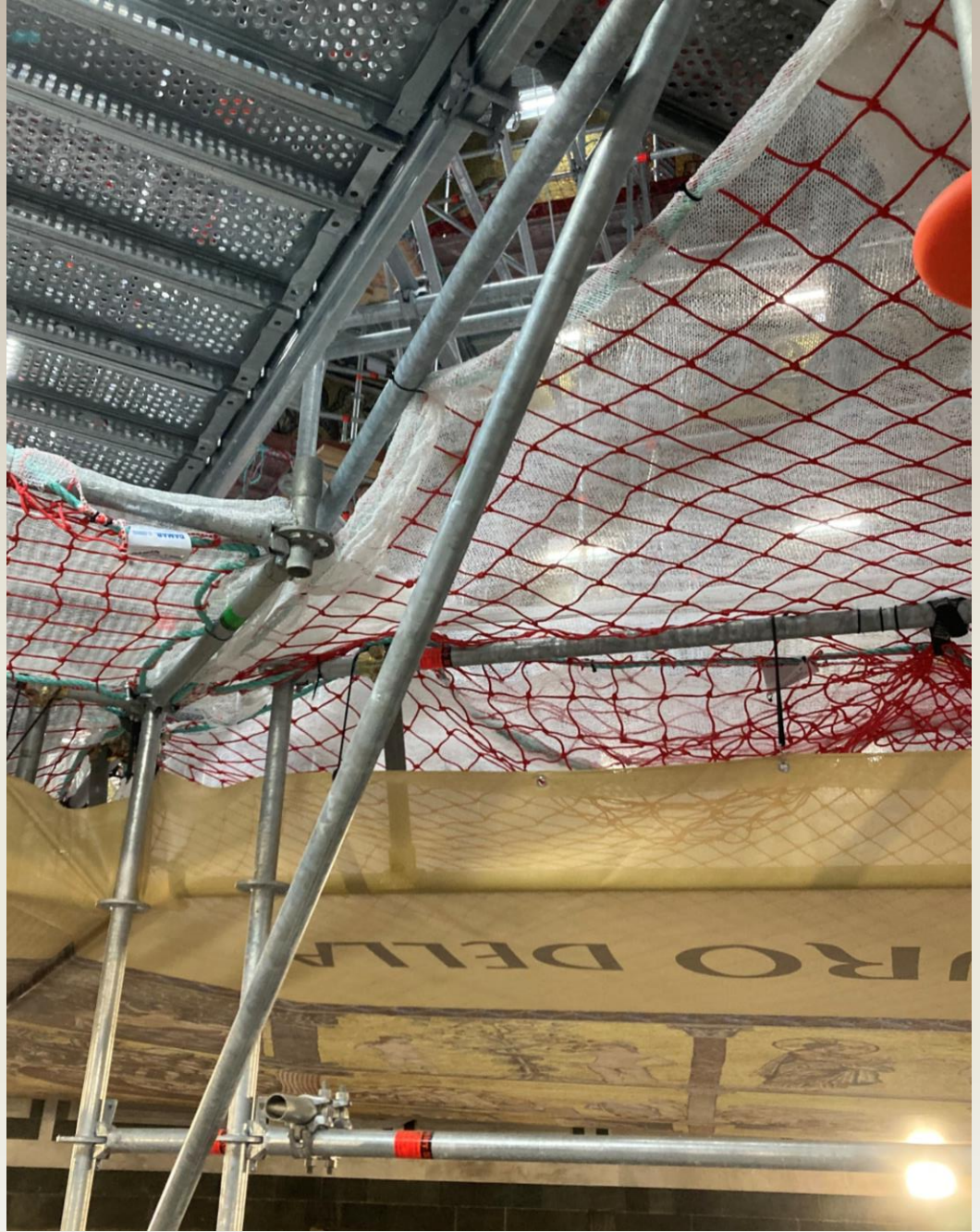






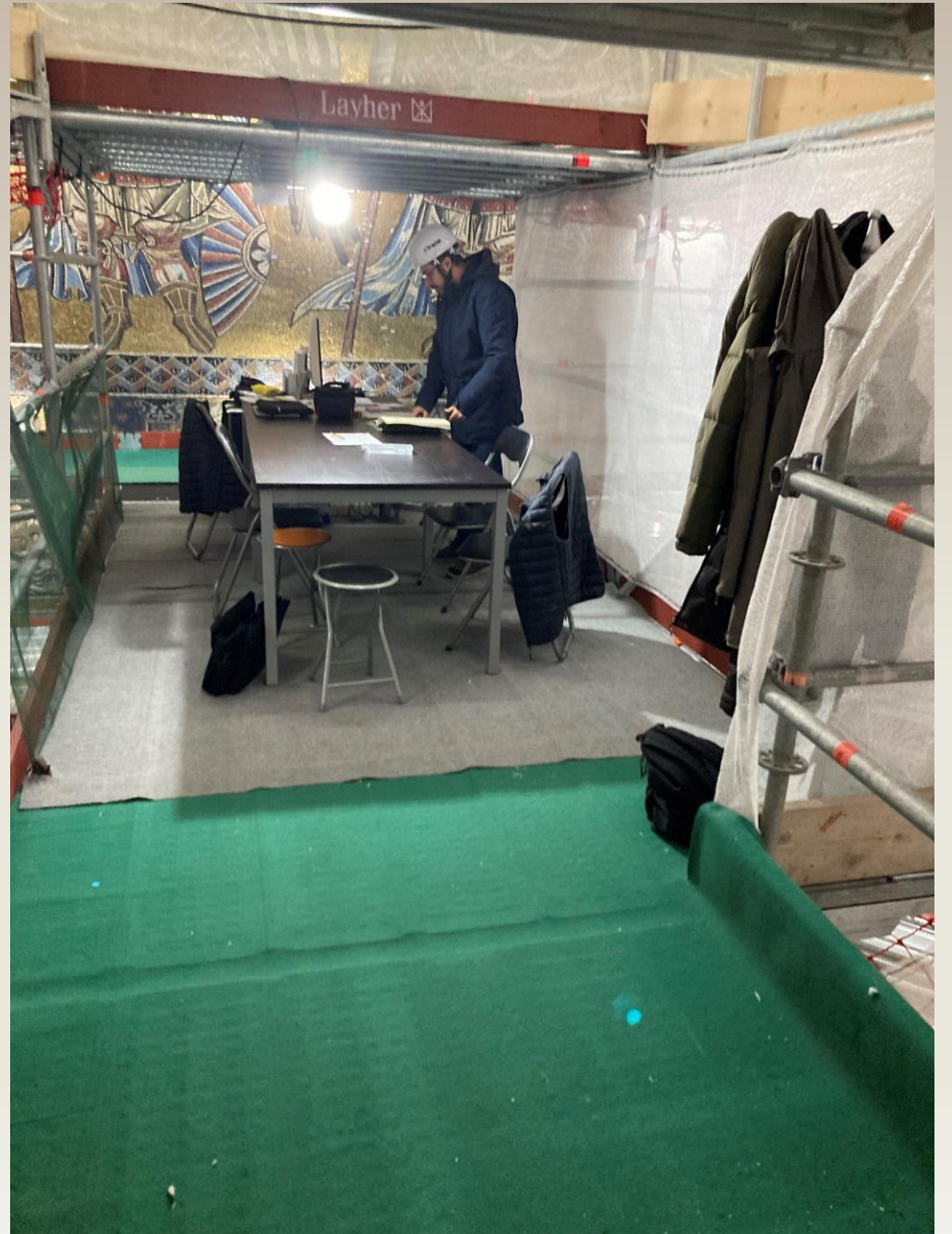


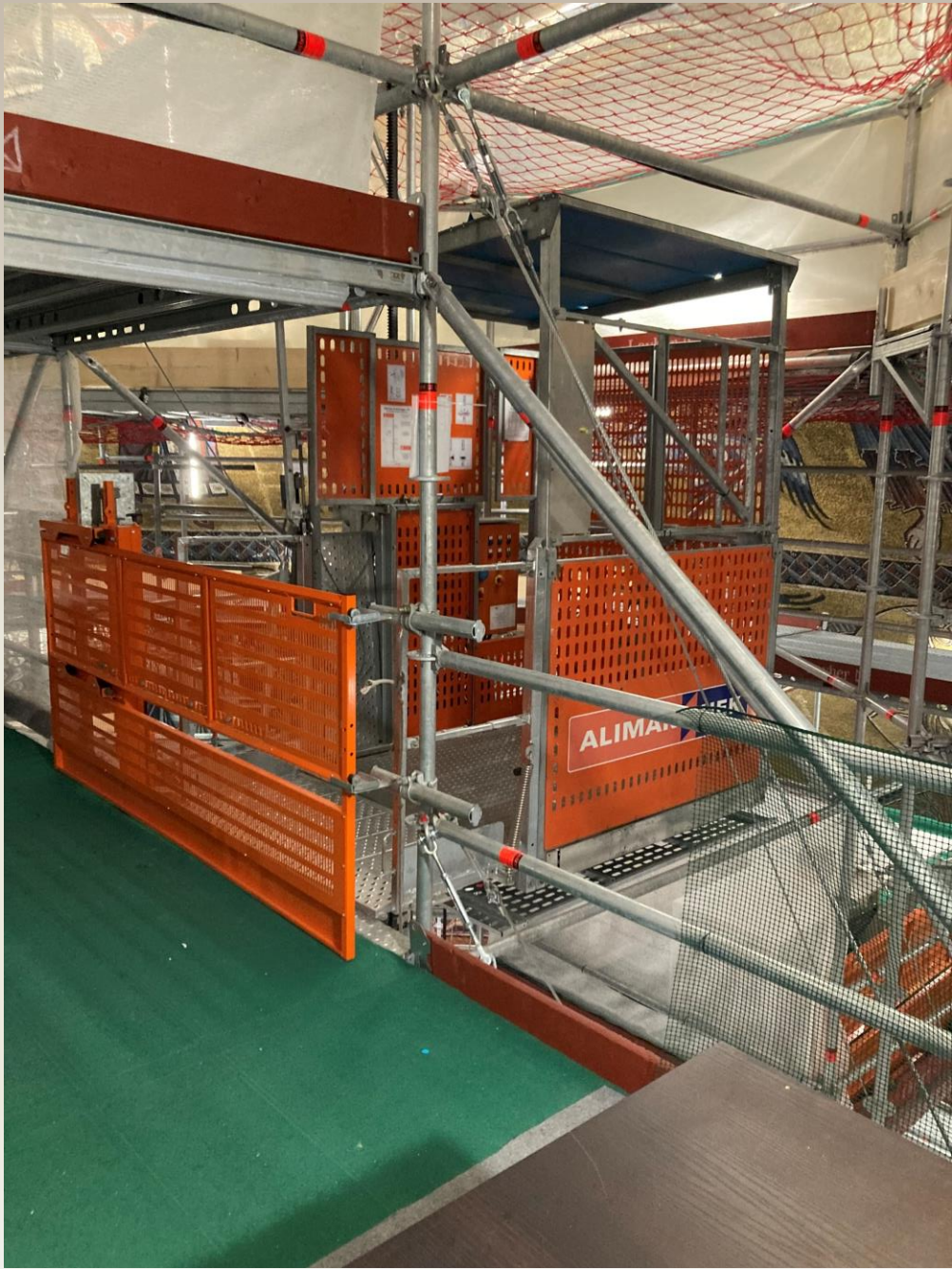


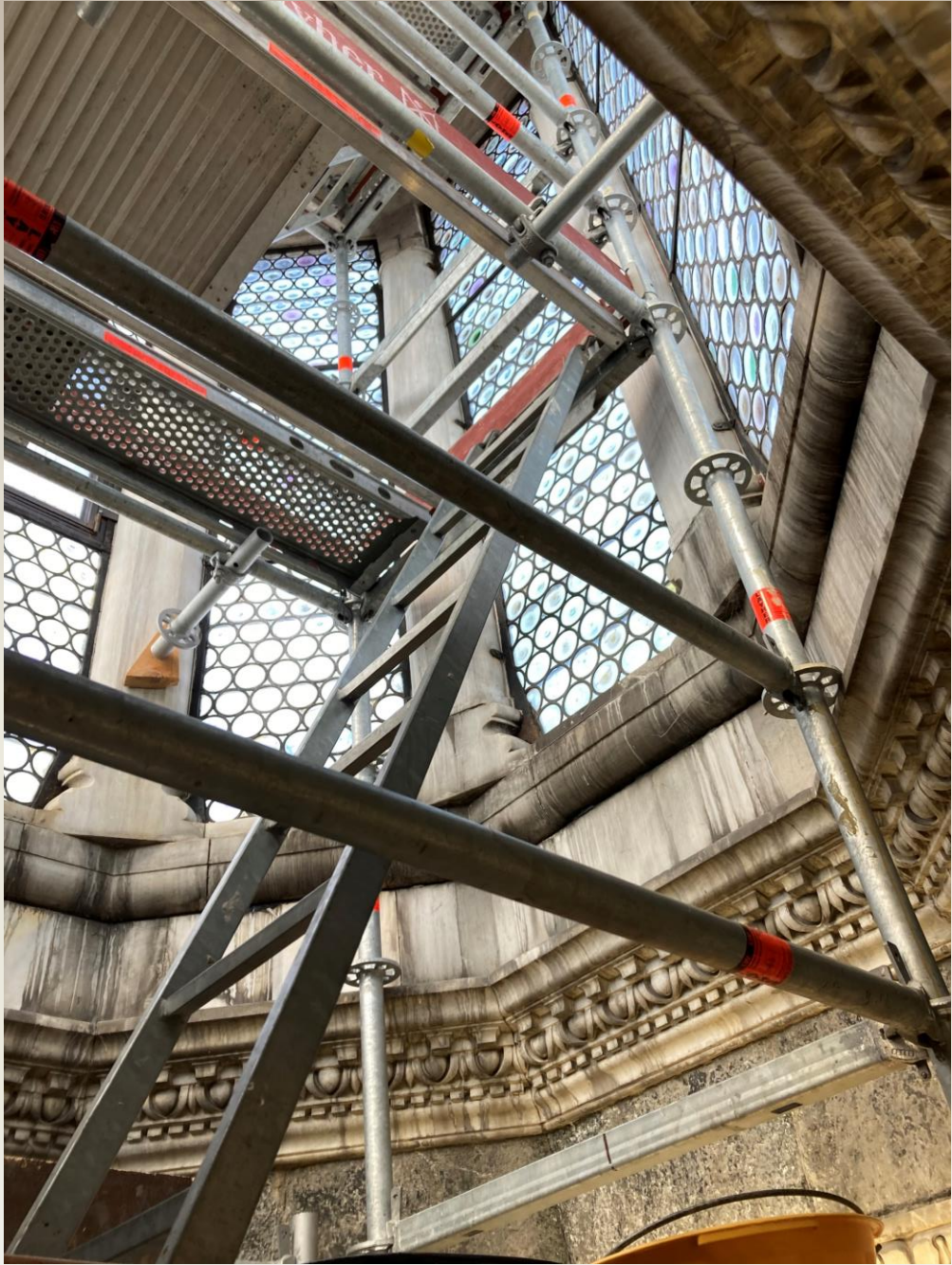








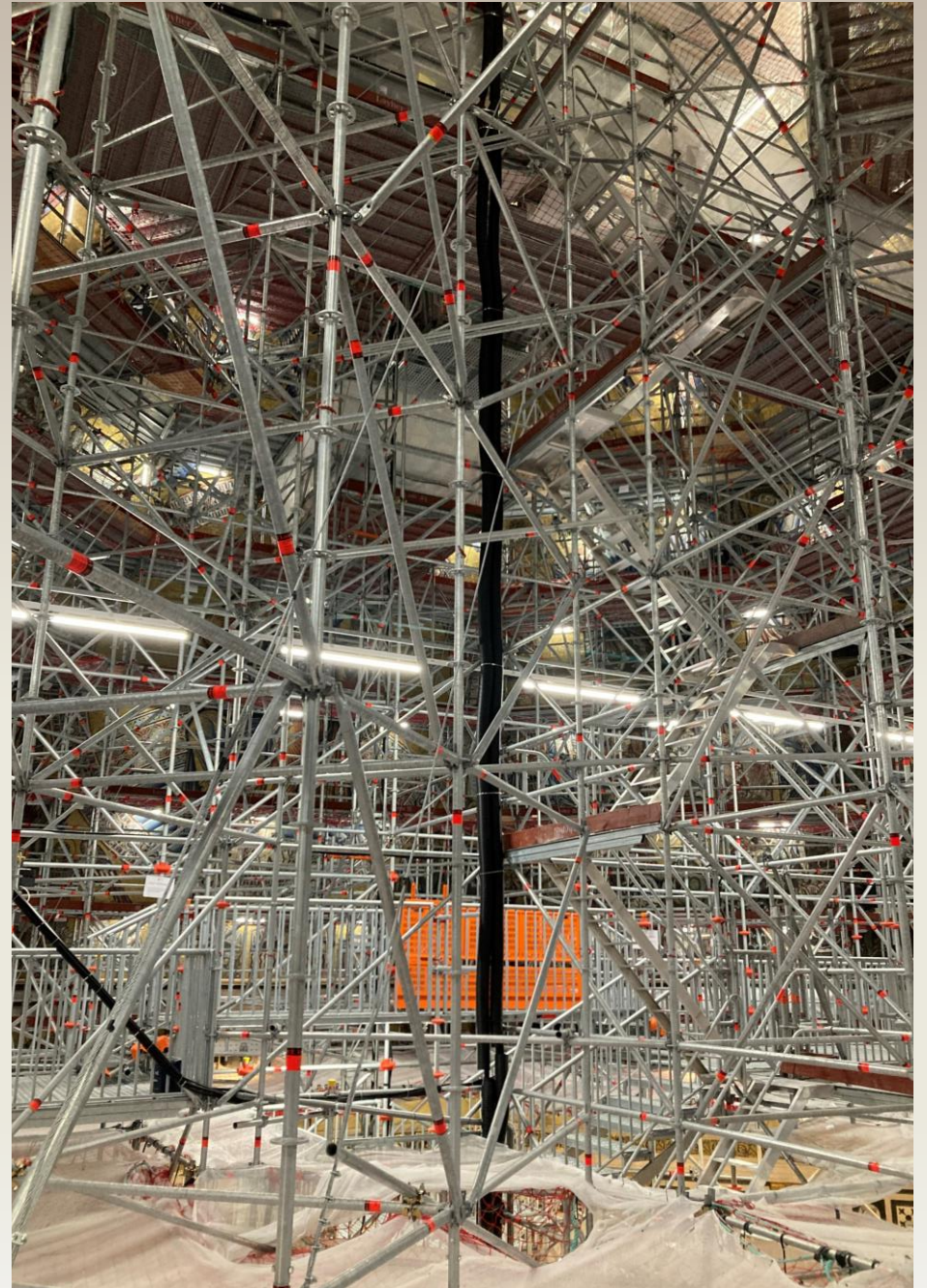












GRAZIE DELL' ATTENZIONE
E
BUONA SERATA A TUTTI