

Fig. 1 Scudo Verde (PUMS Comune FI)

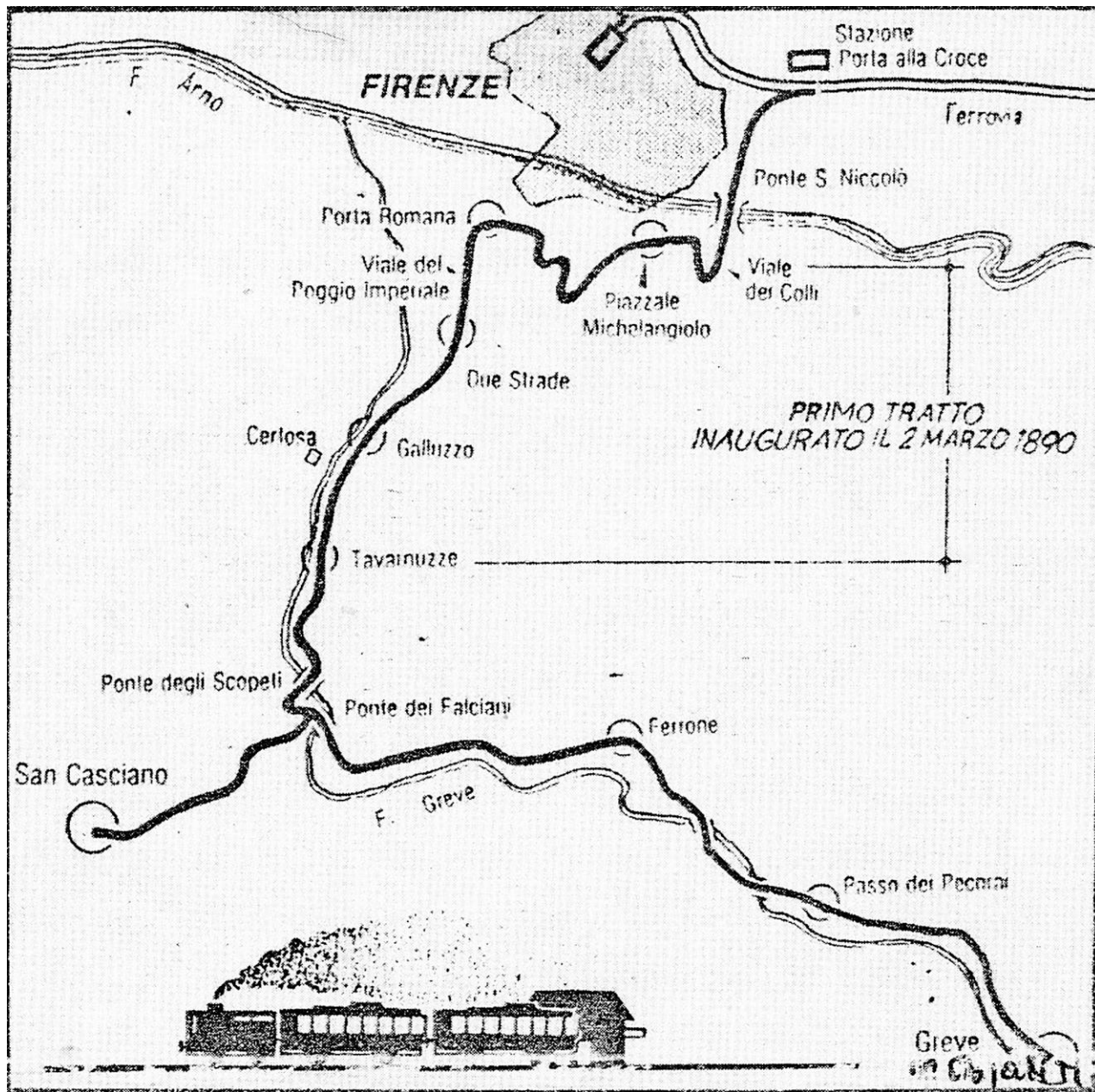


Fig. 2 Storica Tranvia del Chianti 1889-1935

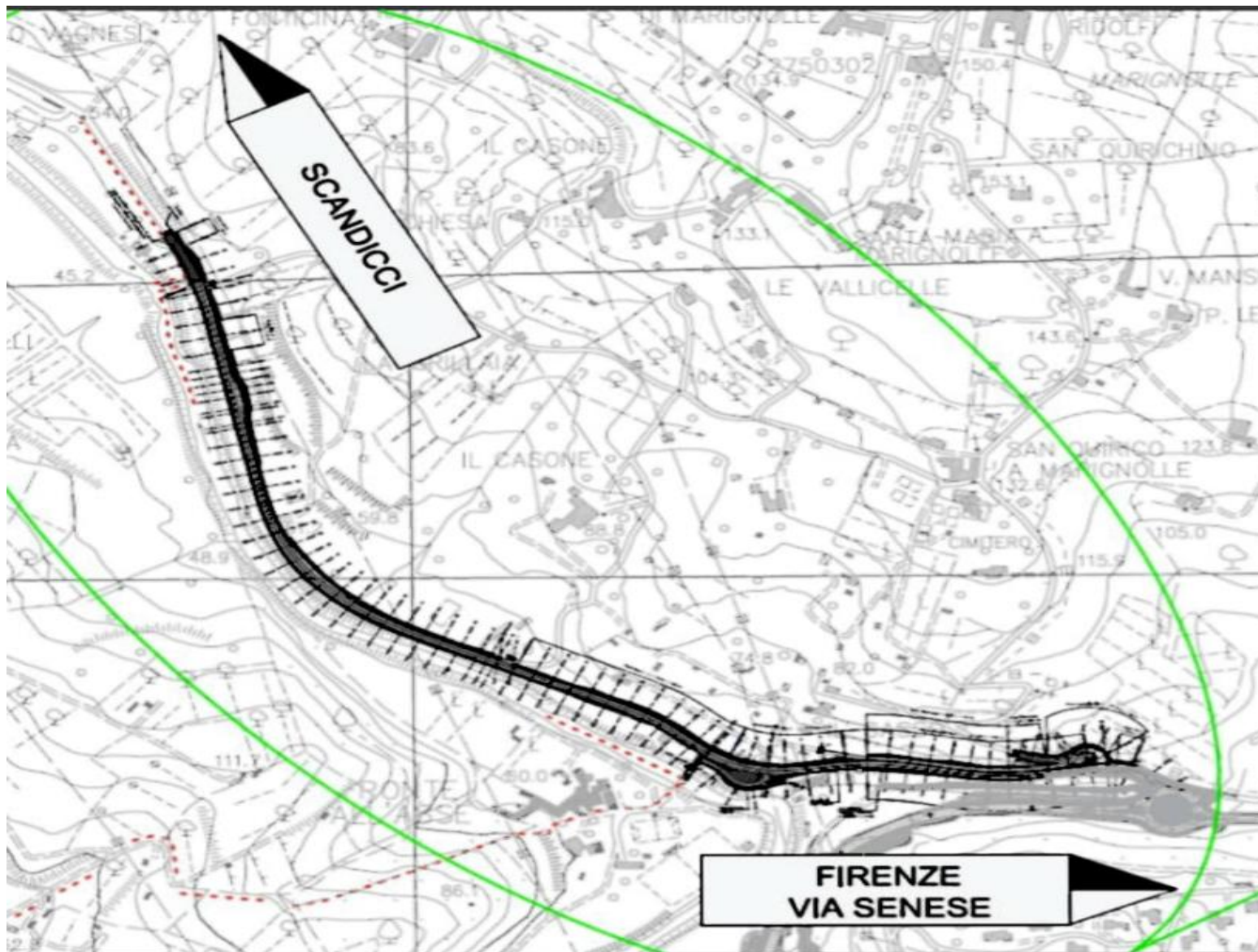


Fig. 3 Allargamento di Via delle Bagnese

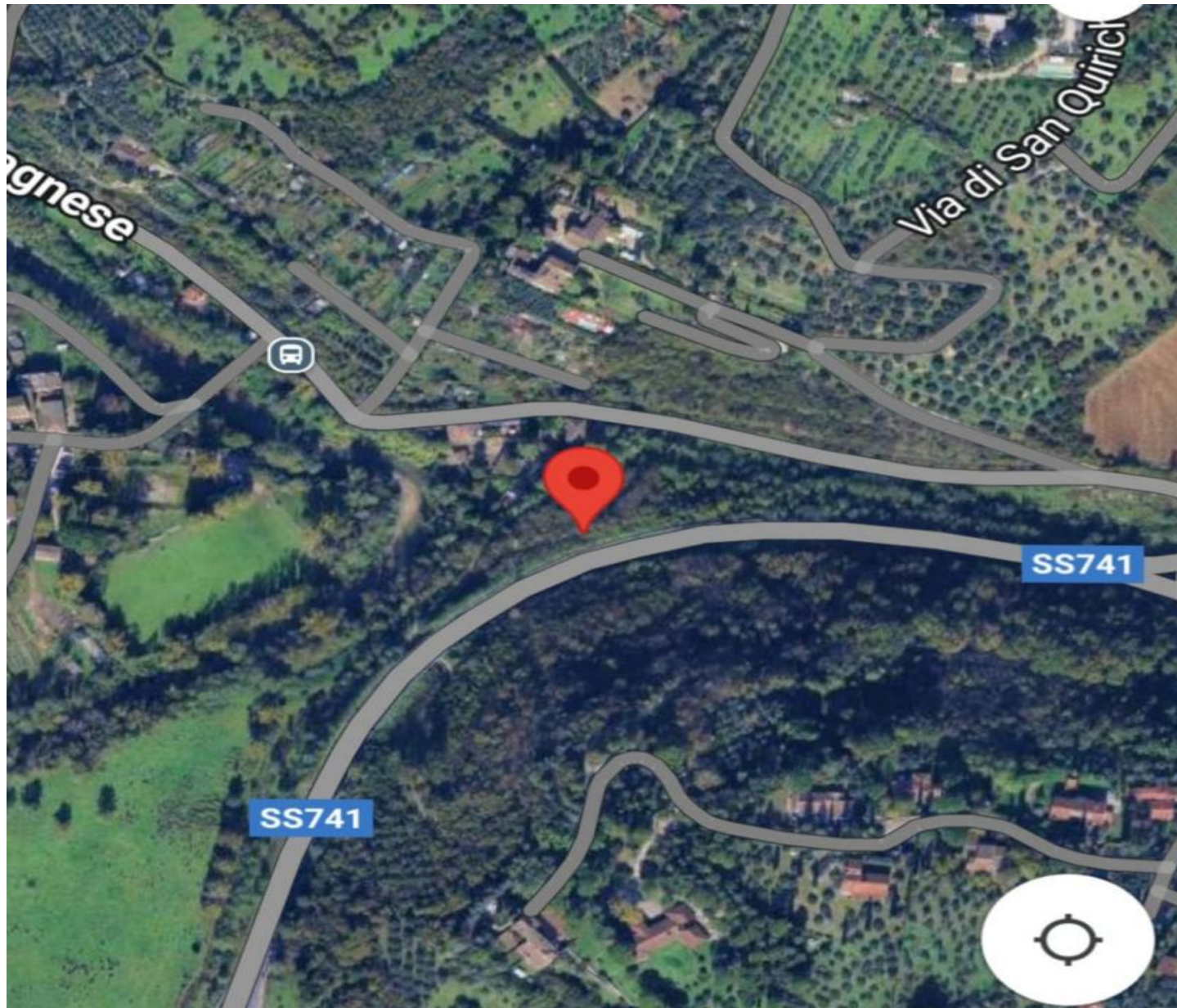


Fig 4 Planimetria Bypass-Ponte all'Asse (via delle Bagnese)



Fig. 5 Rotatoria Bypass Galluzzo-via delle Bagnese

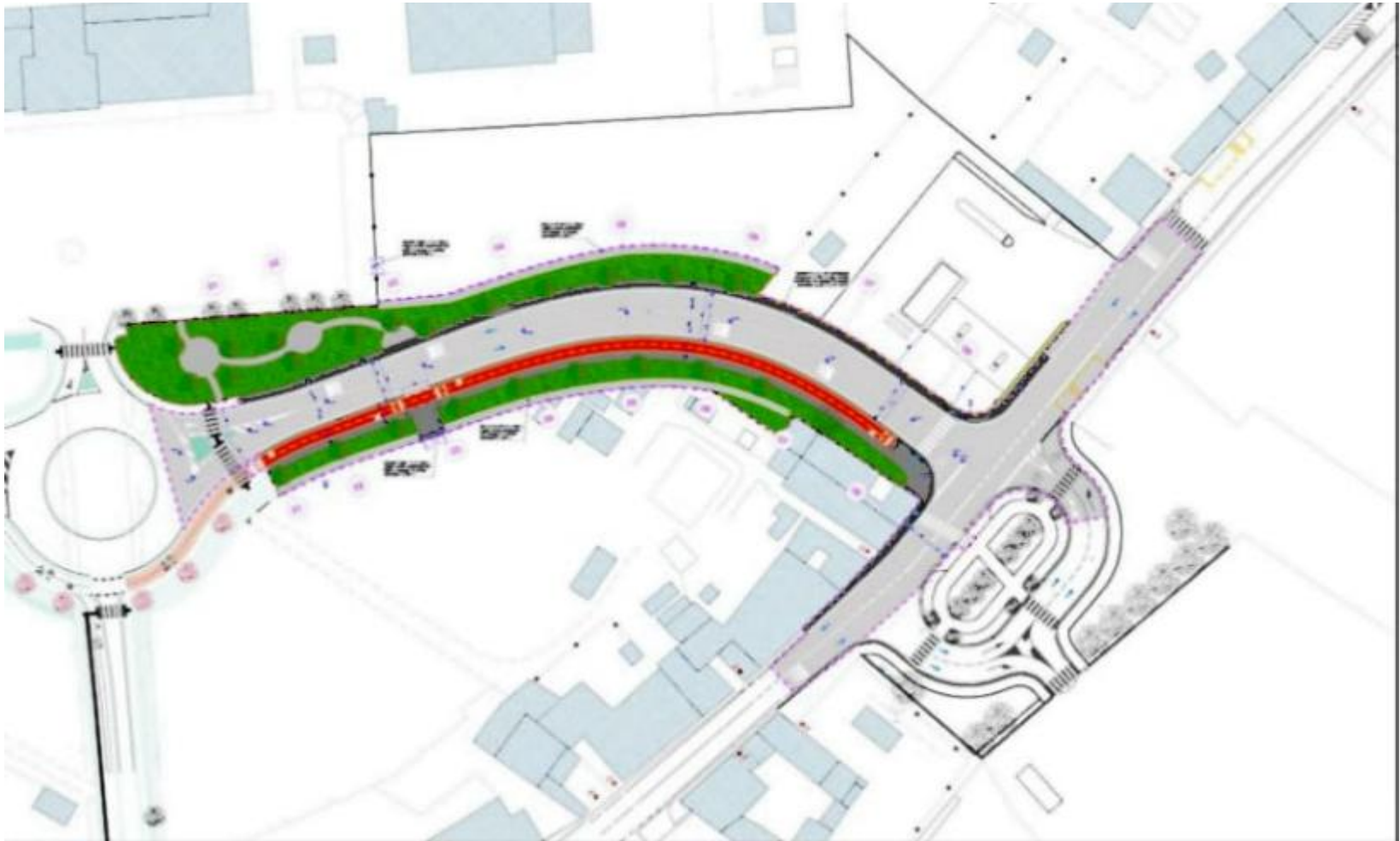


Fig. 6 strada Don Gnocchi-Lupi di Toscana (PUMS Comune FI)



Fig. 7 Rotatorie da fine Viadotto Indiano (svincolo FI-PI-LI) a Ponte a Greve - Via Baccio da Montelupo via Pisana





Fig. 8 Bus elettrico a batterie in ricarica "on the way"

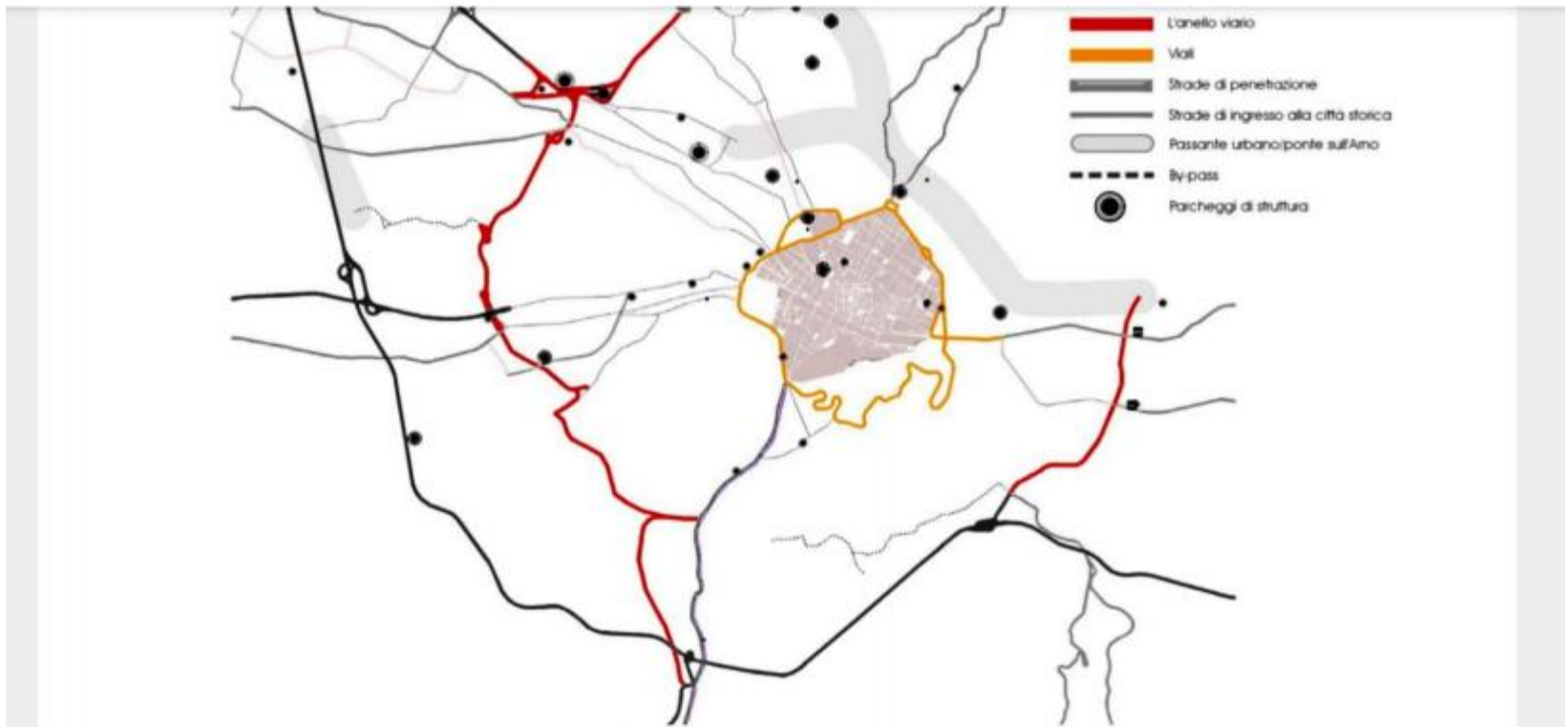


Fig. 9 La situazione delle infrastrutture stradali

(PUMS Comune FI)



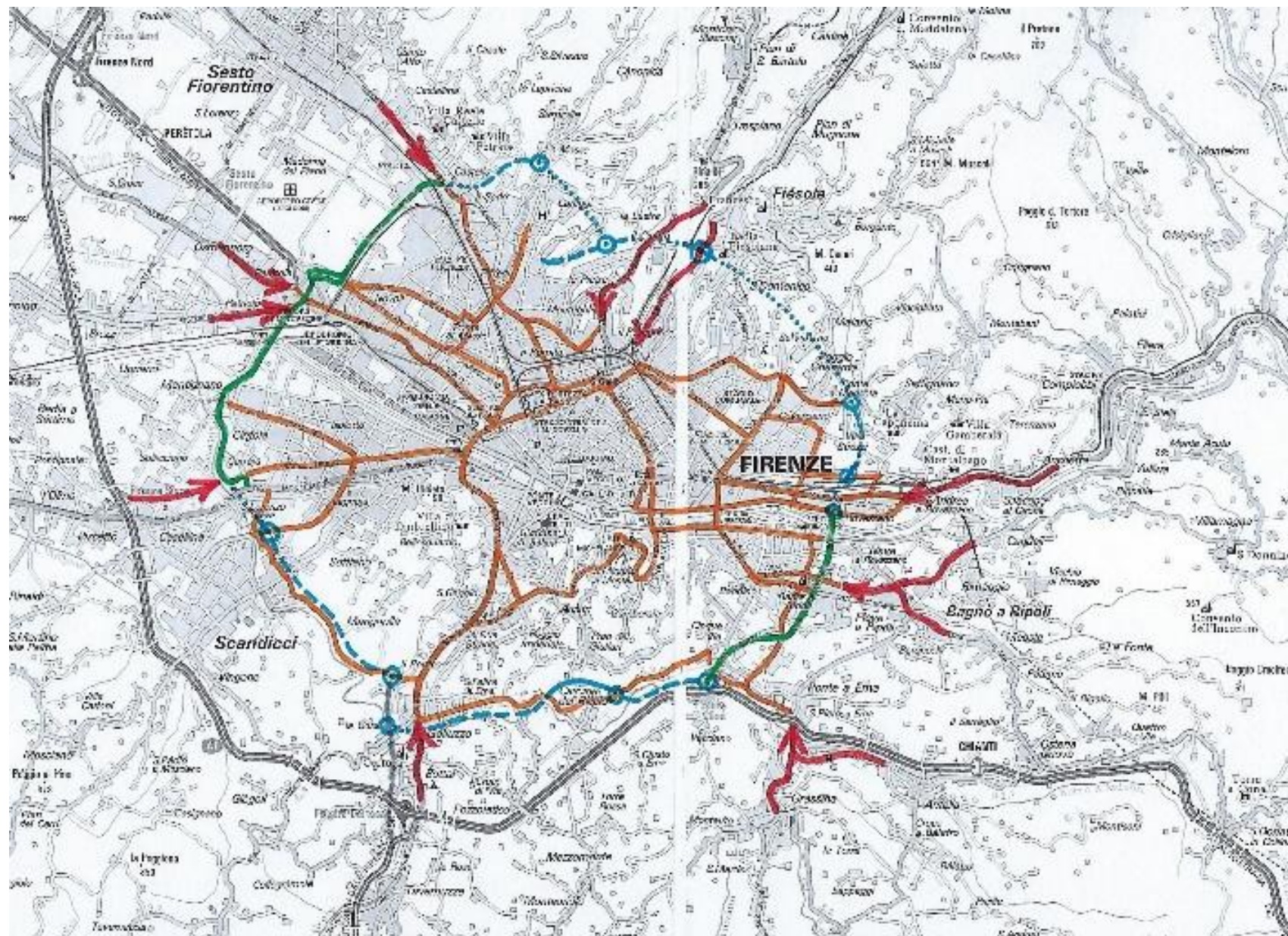


Fig. 10 Vie di penetrazione e scorrimento



Fig. 11 Un Piano per la città (anni '50)

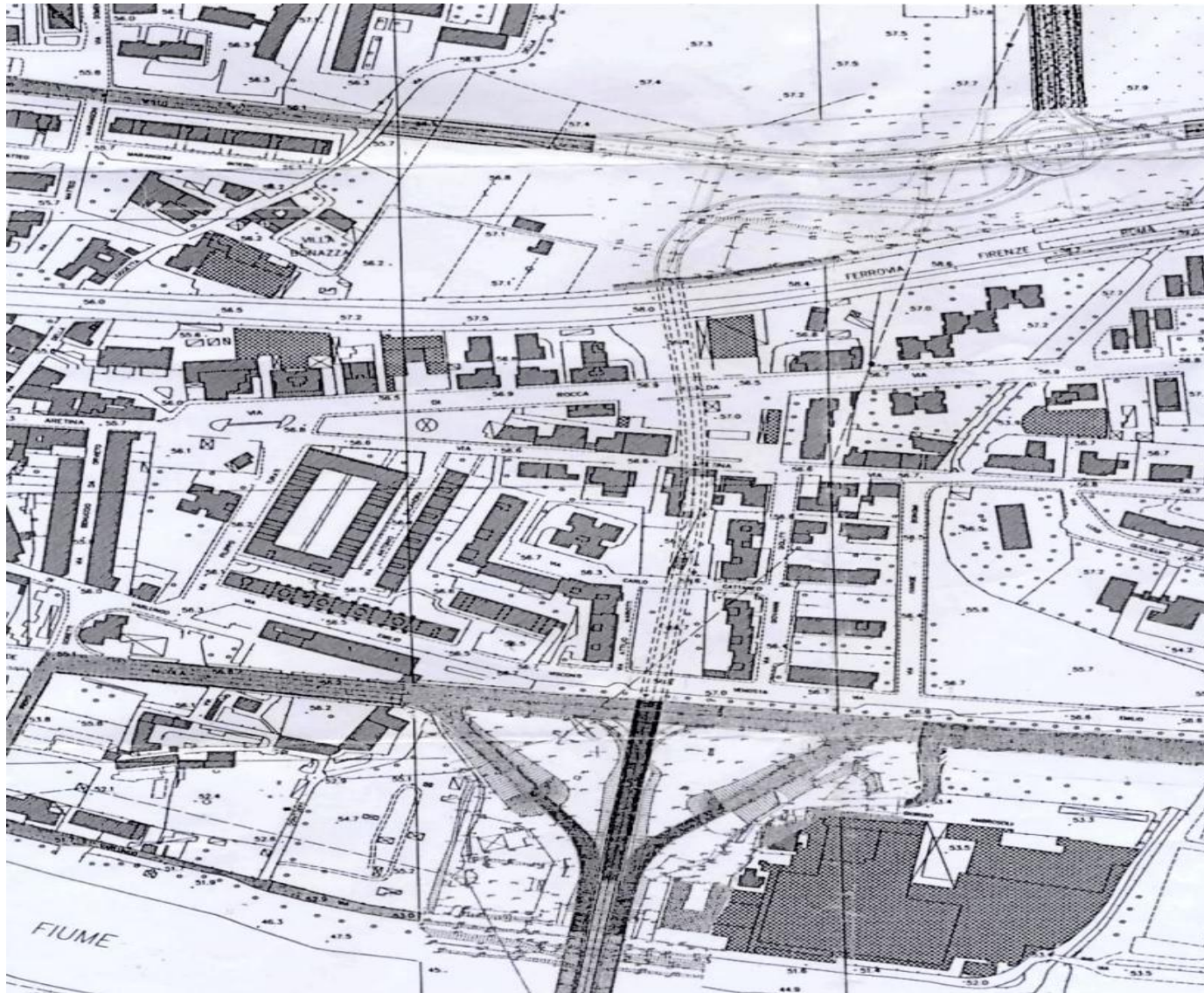


Fig. 12 Collegamento viadotto Varlungo-via della Chimera-via Palazzeschi